

Product datasheet for TP302718

Alpha B Crystallin (CRYAB) (NM_001885) Human Recombinant Protein

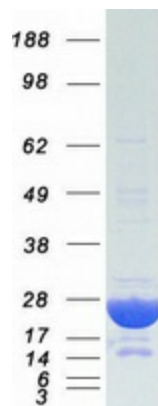
Product data:

Product Type:	Recombinant Proteins
Description:	Recombinant protein of human crystallin, alpha B (CRYAB), 20 µg
Species:	Human
Expression Host:	HEK293T
Expression cDNA Clone or AA Sequence:	>RC202718 protein sequence Red =Cloning site Green =Tags(s)
	MDIAIHHPWIRRPFFPFHSPSRLFDQFFGEHLLESDFPTSTSLSPFYLRPPSFLRAPSWFDTGLSEMRL EKDRFSVNLDVKHFSPEELKVKVLGDVIEVHGKHEERQDEHGFISREFHRKYRIPADVDPLTITSSLSSD GVLTVNGPRKQVSGPERTIPITREEKPAVTAAPKK
	TRTRPLEQKLISEEDLAANDILDYKDDDDKV
Tag:	C-Myc/DDK
Predicted MW:	20 kDa
Concentration:	>0.05 µg/µL as determined by microplate BCA method
Purity:	> 80% as determined by SDS-PAGE and Coomassie blue staining
Buffer:	25 mM Tris-HCl, 100 mM glycine, pH 7.3, 10% glycerol
Preparation:	Recombinant protein was captured through anti-DDK affinity column followed by conventional chromatography steps.
Note:	For testing in cell culture applications, please filter before use. Note that you may experience some loss of protein during the filtration process.
Storage:	Store at -80°C.
Stability:	Stable for 12 months from the date of receipt of the product under proper storage and handling conditions. Avoid repeated freeze-thaw cycles.
RefSeq:	<u>NP_001876</u>
Locus ID:	1410
UniProt ID:	<u>P02511</u>
RefSeq Size:	998


[View online »](#)

Cytogenetics:	11q23.1
RefSeq ORF:	525
Synonyms:	CMD1II; CRYA2; CTPP2; CTRCT16; HEL-S-101; HSPB5; MFM2
Summary:	<p>Mammalian lens crystallins are divided into alpha, beta, and gamma families. Alpha crystallins are composed of two gene products: alpha-A and alpha-B, for acidic and basic, respectively. Alpha crystallins can be induced by heat shock and are members of the small heat shock protein (HSP20) family. They act as molecular chaperones although they do not renature proteins and release them in the fashion of a true chaperone; instead they hold them in large soluble aggregates. These heterogeneous aggregates consist of 30-40 subunits; the alpha-A and alpha-B subunits have a 3:1 ratio, respectively. Two additional functions of alpha crystallins are an autokinase activity and participation in the intracellular architecture. The encoded protein has been identified as a moonlighting protein based on its ability to perform mechanistically distinct functions. Alpha-A and alpha-B gene products are differentially expressed; alpha-A is preferentially restricted to the lens and alpha-B is expressed widely in many tissues and organs. Elevated expression of alpha-B crystallin occurs in many neurological diseases; a missense mutation cosegregated in a family with a desmin-related myopathy. Alternative splicing results in multiple transcript variants. [provided by RefSeq, Jan 2019]</p>

Product images:



Coomassie blue staining of purified CRYAB protein (Cat# TP302718). The protein was produced from HEK293T cells transfected with CRYAB cDNA clone (Cat# [RC202718]) using MegaTran 2.0 (Cat# [TT210002]).