

## Product datasheet for **TP302717SE**

### GLP1 (GCG) (NM\_002054) Human Recombinant Protein

#### Product data:

Product Type:	Recombinant Proteins
Description:	Purified recombinant protein of Human glucagon (GCG), secretory expressed in HEK293T cells, 20ug
Species:	Human
Expression Host:	HEK293T
Expression cDNA Clone or AA Sequence:	>RC202717 protein sequence <b>Red</b> =Cloning site <b>Green</b> =Tags(s)  MKSIYFVAGLFVMLVQGSWQSLQDTEEKSRFSASQADPLSDPDQMNE DKRHSQGTFTSDYSKYLDSR R AQDFVQWLMNTKRNRNNIAKRHDEFERHAEGTFTSDVSSYLEGQAAKEFIAWLVKGRRRDFPEEVAIVE ELGRRHADGSFSDEMNTILDNLAARDFINWLIQTKITDRK  <b>TRTRPLEQKLISEEDLAANDILDYKDDDDKV</b>
Tag:	C-Myc/DDK
Predicted MW:	22.2 kDa
Concentration:	>50 ug/mL as determined by microplate Bradford method
Purity:	> 80% as determined by SDS-PAGE and Coomassie blue staining
Buffer:	25mM Tris-HCl, pH7.3, 100mM glycine, 10% glycerol
Note:	For culture applications, please filter before use. Note that you may experience some loss of protein during the filtration process.
Storage:	Store at -80°C after receiving vials.
Stability:	Stable for at least 1 year from receipt of products under proper storage and handling conditions. Avoid repeated freeze-thaw cycles.
RefSeq:	<u><a href="#">NP_002045</a></u>
Locus ID:	2641
UniProt ID:	<u><a href="#">P01275</a></u>
RefSeq Size:	1294


[View online »](#)

**Cytogenetics:** 2q24.2

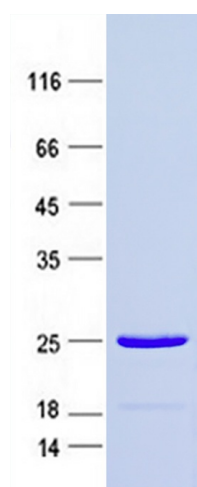
**RefSeq ORF:** 540

**Synonyms:** GLP-1; GLP1; GLP2; GRPP

**Summary:** The protein encoded by this gene is actually a preproprotein that is cleaved into four distinct mature peptides. One of these, glucagon, is a pancreatic hormone that counteracts the glucose-lowering action of insulin by stimulating glycogenolysis and gluconeogenesis. Glucagon is a ligand for a specific G-protein linked receptor whose signalling pathway controls cell proliferation. Two of the other peptides are secreted from gut endocrine cells and promote nutrient absorption through distinct mechanisms. Finally, the fourth peptide is similar to glicentin, an active enteroglucagon. [provided by RefSeq, Jul 2008]

**Protein Families:** Druggable Genome, ES Cell Differentiation/IPS, Secreted Protein

### Product images:



Coomassie blue staining of purified GCG protein (Cat #TP302717SE). The protein was produced from mammalian cells transfected with GCG cDNA clone (Cat #[RC202717]).