

Product datasheet for TP302717L

GLP1 (GCG) (NM_002054) Human Recombinant Protein

Product data:

Product Type:	Recombinant Proteins
Description:	Purified recombinant protein of Homo sapiens glucagon (GCG), 1 mg
Species:	Human
Expression Host:	HEK293T
Expression cDNA Clone or AA Sequence:	>RC202717 protein sequence Red =Cloning site Green =Tags(s)
	MKSIYFVAGLFVMLVQGSWQRSLQDTEEKSRFSASQADPLSDPDQMNEKDRHSQGTFTSDYSKYLDSRR AQDFVQWLMNTRNRNNIKRHDEFERHAEGTFTSDVSSYLEGQAAKEFIAWLVKGRGRDRDFPEEVAIVE ELGRRHADGGSFSDMNTILDNLAARDFINWLIQTKITDRK
	TRTRPLEQKLISEEDLAANDILDYKDDDDKV
Tag:	C-Myc/DDK
Predicted MW:	18.6 kDa
Concentration:	>0.1 µg/µL as determined by microplate BCA method
Purity:	> 80% as determined by SDS-PAGE and Coomassie blue staining
Buffer:	25 mM Tris-HCl, 100 mM glycine, pH 7.3, 10% glycerol
Preparation:	Recombinant protein was captured through anti-DDK affinity column followed by conventional chromatography steps.
Note:	For testing in cell culture applications, please filter before use. Note that you may experience some loss of protein during the filtration process.
Storage:	Store at -80°C.
Stability:	Stable for 12 months from the date of receipt of the product under proper storage and handling conditions. Avoid repeated freeze-thaw cycles.
RefSeq:	NP_002045
Locus ID:	2641
UniProt ID:	P01275
RefSeq Size:	1294



[View online »](#)

Cytogenetics: 2q24.2

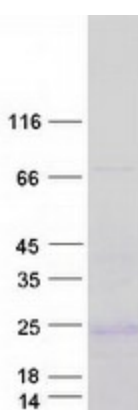
RefSeq ORF: 540

Synonyms: GLP-1; GLP1; GLP2; GRPP

Summary: The protein encoded by this gene is actually a preproprotein that is cleaved into four distinct mature peptides. One of these, glucagon, is a pancreatic hormone that counteracts the glucose-lowering action of insulin by stimulating glycogenolysis and gluconeogenesis. Glucagon is a ligand for a specific G-protein linked receptor whose signalling pathway controls cell proliferation. Two of the other peptides are secreted from gut endocrine cells and promote nutrient absorption through distinct mechanisms. Finally, the fourth peptide is similar to glicentin, an active enteroglucagon. [provided by RefSeq, Jul 2008]

Protein Families: Druggable Genome, ES Cell Differentiation/IPS, Secreted Protein

Product images:



Coomassie blue staining of purified GCG protein (Cat# [TP302717]). The protein was produced from HEK293T cells transfected with GCG cDNA clone (Cat# [RC202717]) using MegaTran 2.0 (Cat# [TT210002]).