

Product datasheet for **TP302717**

GLP1 (GCG) (NM_002054) Human Recombinant Protein

Product data:

Product Type: Recombinant Proteins

Description: Purified recombinant protein of Homo sapiens glucagon (GCG), 20 µg

Species: Human

Expression Host: HEK293T

**Expression cDNA Clone
or AA Sequence:** >RC202717 protein sequence
Red=Cloning site **Green**=Tags(s)

MKSIYFVAGLFVMLVQGSWQRSLQDTEEKSRFSASQADPLSDPDQMNEKDRHSQGTFTSDYSKYLDSRR
AQDFVQWLMNTRNRNRIAKRHDEFERHAEGTFTSDVSSYLEGQAAKEFIAWLVKGRGRDRDFPEEVAIVE
ELGRRHADGFSFDEMNTILDNLAARDFINWLIQTKITDRK

TRTRPLEQKLISEEDLAANDILDYKDDDDKV

Tag: C-Myc/DDK

Predicted MW: 18.6 kDa

Concentration: >0.1 µg/µL as determined by microplate BCA method

Purity: > 80% as determined by SDS-PAGE and Coomassie blue staining

Buffer: 25 mM Tris-HCl, 100 mM glycine, pH 7.3, 10% glycerol

Preparation: Recombinant protein was captured through anti-DDK affinity column followed by conventional chromatography steps.

Note: For testing in cell culture applications, please filter before use. Note that you may experience some loss of protein during the filtration process.

Storage: Store at -80°C.

Stability: Stable for 12 months from the date of receipt of the product under proper storage and handling conditions. Avoid repeated freeze-thaw cycles.

RefSeq: [NP_002045](#)

Locus ID: 2641

UniProt ID: [P01275](#)

RefSeq Size: 1294



[View online »](#)

Cytogenetics: 2q24.2

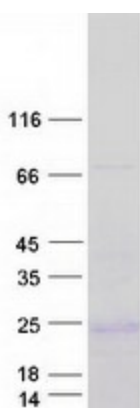
RefSeq ORF: 540

Synonyms: GLP-1; GLP1; GLP2; GRPP

Summary: The protein encoded by this gene is actually a preproprotein that is cleaved into four distinct mature peptides. One of these, glucagon, is a pancreatic hormone that counteracts the glucose-lowering action of insulin by stimulating glycogenolysis and gluconeogenesis. Glucagon is a ligand for a specific G-protein linked receptor whose signalling pathway controls cell proliferation. Two of the other peptides are secreted from gut endocrine cells and promote nutrient absorption through distinct mechanisms. Finally, the fourth peptide is similar to glicentin, an active enteroglucagon. [provided by RefSeq, Jul 2008]

Protein Families: Druggable Genome, ES Cell Differentiation/IPS, Secreted Protein

Product images:



Coomassie blue staining of purified GCG protein (Cat# TP302717). The protein was produced from HEK293T cells transfected with GCG cDNA clone (Cat# [RC202717]) using MegaTran 2.0 (Cat# [TT210002]).