

Product datasheet for **TP302716L**

IL18 (NM_001562) Human Recombinant Protein

Product data:

Product Type:	Recombinant Proteins
Description:	Recombinant protein of human interleukin 18 (interferon-gamma-inducing factor) (IL18), 1 mg
Species:	Human
Expression Host:	HEK293T
Expression cDNA Clone or AA Sequence:	>RC202716 protein sequence Red =Cloning site Green =Tags(s)

MAAEPVEDNCIN FVAMKFIDNTLYFIAEDDENLES DYFGKLESKLSVIRNLNDQVLFIDQGNRPLFEDMT
DSDCRDNAPRTIFIISMYKDSQPRGM AVTISVKCEKISTLSCENKIISFKEMNPPDNIKDTKSDIIFQR
SVPGHDNKMQFESSYEGYFLACEKERDLFKLILKKEDELGDRSIMFTVQNE D

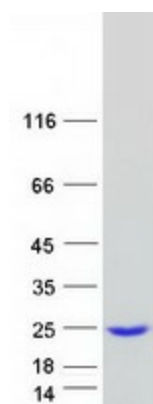
TRTRPLEQKLISEEDLAANDILDYKDDDDKV

Tag:	C-Myc/DDK
Predicted MW:	22.1 kDa
Concentration:	>0.05 µg/µL as determined by microplate BCA method
Purity:	> 80% as determined by SDS-PAGE and Coomassie blue staining
Buffer:	25 mM Tris-HCl, 100 mM glycine, pH 7.3, 10% glycerol
Preparation:	Recombinant protein was captured through anti-DDK affinity column followed by conventional chromatography steps.
Note:	For testing in cell culture applications, please filter before use. Note that you may experience some loss of protein during the filtration process.
Storage:	Store at -80°C.
Stability:	Stable for 12 months from the date of receipt of the product under proper storage and handling conditions. Avoid repeated freeze-thaw cycles.
RefSeq:	NP_001553
Locus ID:	3606
UniProt ID:	Q14116
RefSeq Size:	1163



[View online »](#)

Cytogenetics:	11q23.1
RefSeq ORF:	579
Synonyms:	IGIF; IL-1g; IL-18; IL1F4
Summary:	The protein encoded by this gene is a proinflammatory cytokine of the IL-1 family that is constitutively found as a precursor within the cytoplasm of a variety of cells including macrophages and keratinocytes. The inactive IL-18 precursor is processed to its active form by caspase-1, and is capable of stimulating interferon gamma production, and of regulating both T helper (Th) 1 and Th2 responses. This cytokine has been implicated in the injury of different organs, and in potentially fatal conditions characterized by a cytokine storm. In humans, IL-18 gene is located on chromosome 11. Alternatively spliced transcript variants encoding different isoforms have been found for this gene.[provided by RefSeq, Aug 2020]
Protein Families:	Druggable Genome, Secreted Protein
Protein Pathways:	Cytokine-cytokine receptor interaction, Cytosolic DNA-sensing pathway, NOD-like receptor signaling pathway

Product images:

Coomassie blue staining of purified IL18 protein (Cat# [TP302716]). The protein was produced from HEK293T cells transfected with IL18 cDNA clone (Cat# [RC202716]) using MegaTran 2.0 (Cat# [TT210002]).