

Product datasheet for **TP302707M**

CXCL5 (NM_002994) Human Recombinant Protein

Product data:

| | |
|---------------------------------------|--|
| Product Type: | Recombinant Proteins |
| Description: | Recombinant protein of human chemokine (C-X-C motif) ligand 5 (CXCL5), 100 µg |
| Species: | Human |
| Expression Host: | HEK293T |
| Expression cDNA Clone or AA Sequence: | >RC202707 protein sequence Red =Cloning site Green =Tags(s) |
| | MSLLSSRAARVPGPSSSLCALLVLLLLLTQPGPIASAGPAAAVLRELRCVCLQTTQGVHPKMISNLQVFA IGPQCSKVEVWASLKNGKEICLDPEAPFLKKVIQKILDGGNKEN TRTRPLEQKLISEEDLAANDILDYKDDDDKV |
| Tag: | C-Myc/DDK |
| Predicted MW: | 8.3 kDa |
| Concentration: | >0.05 µg/µL as determined by microplate BCA method |
| Purity: | > 80% as determined by SDS-PAGE and Coomassie blue staining |
| Buffer: | 25 mM Tris-HCl, 100 mM glycine, pH 7.3, 10% glycerol |
| Preparation: | Recombinant protein was captured through anti-DDK affinity column followed by conventional chromatography steps. |
| Note: | For testing in cell culture applications, please filter before use. Note that you may experience some loss of protein during the filtration process. |
| Storage: | Store at -80°C. |
| Stability: | Stable for 12 months from the date of receipt of the product under proper storage and handling conditions. Avoid repeated freeze-thaw cycles. |
| RefSeq: | NP_002985 |
| Locus ID: | 6374 |
| UniProt ID: | P42830 , Q6I9S7 |
| RefSeq Size: | 2505 |
| Cytogenetics: | 4q13.3 |



[View online »](#)

RefSeq ORF: 342

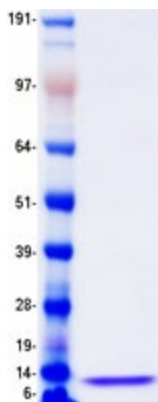
Synonyms: ENA-78; SCYB5

Summary: This gene encodes a protein that is a member of the CXC subfamily of chemokines. Chemokines, which recruit and activate leukocytes, are classified by function (inflammatory or homeostatic) or by structure. This protein is proposed to bind the G-protein coupled receptor chemokine (C-X-C motif) receptor 2 to recruit neutrophils, to promote angiogenesis and to remodel connective tissues. This protein is thought to play a role in cancer cell proliferation, migration, and invasion. [provided by RefSeq, May 2013]

Protein Families: Druggable Genome, Secreted Protein

Protein Pathways: Chemokine signaling pathway, Cytokine-cytokine receptor interaction

Product images:



Coomassie blue staining of purified CXCL5 protein (Cat# [TP302707]). The protein was produced from HEK293T cells transfected with CXCL5 cDNA clone (Cat# [RC202707]) using MegaTran 2.0 (Cat# [TT210002]).