

## Product datasheet for **TP302703M**

### Caveolin 2 (CAV2) (NM\_001233) Human Recombinant Protein

#### Product data:

Product Type:	Recombinant Proteins
Description:	Recombinant protein of human caveolin 2 (CAV2), transcript variant 1, 100 µg
Species:	Human
Expression Host:	HEK293T
Expression cDNA Clone or AA Sequence:	>RC202703 representing NM_001233 <b>Red</b> =Cloning site <b>Green</b> =Tags(s)
	<p>MGLETEKADVQLFMDDDSYSHHSGLEYADPEKFADSDQDRDPHRLNLSHLKLG FEDVIAEPVTTTHSFDKWW ICSHALFEISKYVMYKFLTVFLAIPLAFIAGILFATLSCLHIWILMPFVKTCMLMVLPSVQTIWKSVDVI IAPLCTSVGRCFSSVSLQLSQD</p> <p><b>TRTRPLEQKLISEEDLAANDILDYKDDDDKV</b></p>
Tag:	C-Myc/DDK
Predicted MW:	18.1 kDa
Concentration:	>0.05 µg/µL as determined by microplate BCA method
Purity:	> 80% as determined by SDS-PAGE and Coomassie blue staining
Buffer:	25 mM Tris-HCl, 100 mM glycine, pH 7.3, 10% glycerol
Preparation:	Recombinant protein was captured through anti-DDK affinity column followed by conventional chromatography steps.
Note:	For testing in cell culture applications, please filter before use. Note that you may experience some loss of protein during the filtration process.
Storage:	Store at -80°C.
Stability:	Stable for 12 months from the date of receipt of the product under proper storage and handling conditions. Avoid repeated freeze-thaw cycles.
RefSeq:	<a href="#">NP_001224</a>
Locus ID:	858
UniProt ID:	<a href="#">P51636</a> , <a href="#">Q53X57</a>
RefSeq Size:	3332



[View online »](#)

Cytogenetics: 7q31.2

RefSeq ORF: 486

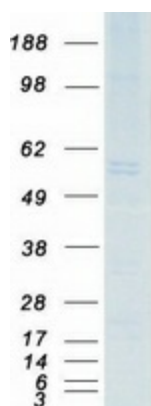
Synonyms: CAV

**Summary:** The protein encoded by this gene is a major component of the inner surface of caveolae, small invaginations of the plasma membrane, and is involved in essential cellular functions, including signal transduction, lipid metabolism, cellular growth control and apoptosis. This protein may function as a tumor suppressor. This gene and related family member (CAV1) are located next to each other on chromosome 7, and express colocalizing proteins that form a stable hetero-oligomeric complex. Alternatively spliced transcript variants encoding different isoforms have been identified for this gene. Additional isoforms resulting from the use of alternate in-frame translation initiation codons have also been described, and shown to have preferential localization in the cell (PMID:11238462). [provided by RefSeq, May 2011]

**Protein Families:** Druggable Genome, Transmembrane

**Protein Pathways:** Focal adhesion

### Product images:



Coomassie blue staining of purified CAV2 protein (Cat# [TP302703]). The protein was produced from HEK293T cells transfected with CAV2 cDNA clone (Cat# [RC202703]) using MegaTran 2.0 (Cat# [TT210002]).