

## Product datasheet for TP302692L

### G3BP (G3BP1) (NM\_005754) Human Recombinant Protein

#### Product data:

Product Type:	Recombinant Proteins
Description:	Recombinant protein of human GTPase activating protein (SH3 domain) binding protein 1 (G3BP1), transcript variant 1, 1 mg
Species:	Human
Expression Host:	HEK293T
Expression cDNA Clone or AA Sequence:	>RC202692 protein sequence <b>Red</b> =Cloning site <b>Green</b> =Tags(s)

MVMEKPSPLLVGREFVRQYYTLLNQAPDMLHRFYGKNSSYVHGGLDSNGKPADAVYGQKEIHRKVMSQNF  
TNCHTKIRHVDAHATLNDGVVQVMGLLSNNNQALRRFMQTFVLAPEGSVANKFYVHNDIFRYQDEVFGG  
FVTEPQEESEEEVEEPEERQQTPEVVPDSDGTFYDQAVVSNDMEEHLEEPVAEPEPDPEPEPEQEPVSEI  
QEEKPEPVLEETAPEDAQKSSSPADIAQTVQEDLRTFSWASVTSKNLPPSGAVPVTGIPPHVVKVPAS  
QRPESKPESQIPPQRQRDQRVREQRINIPPQRGPRPIREAGEQGDIERRMVRHPDSHQLFIGNLPHE  
VDKSELKDFQSYGNVELRINSGGKLPNFGFVFDSEPVQKVLNSRNPIMFRGEVRLNVEEKKTRAARE  
GDRRDNRLRGPGGPRGGLGGMRGPPRGGMVQKPGFGVGRGLAPRQ

**TRTRPLEQKLISEEDLAANDILDYKDDDDKV**

Tag:	C-Myc/DDK
Predicted MW:	52 kDa
Concentration:	>0.05 µg/µL as determined by microplate BCA method
Purity:	> 80% as determined by SDS-PAGE and Coomassie blue staining
Buffer:	25 mM Tris-HCl, 100 mM glycine, pH 7.3, 10% glycerol
Preparation:	Recombinant protein was captured through anti-DDK affinity column followed by conventional chromatography steps.
Note:	For testing in cell culture applications, please filter before use. Note that you may experience some loss of protein during the filtration process.
Storage:	Store at -80°C.
Stability:	Stable for 12 months from the date of receipt of the product under proper storage and handling conditions. Avoid repeated freeze-thaw cycles.



[View online »](#)

RefSeq: [NP\\_005745](#)

Locus ID: 10146

UniProt ID: [Q13283](#), [Q5U0Q1](#), [Q6ZP53](#)

RefSeq Size: 2855

Cytogenetics: 5q33.1

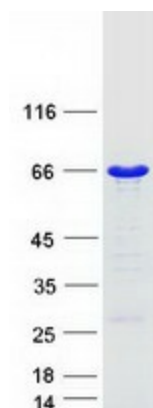
RefSeq ORF: 1398

Synonyms: G3BP; HDH-VIII

**Summary:** This gene encodes one of the DNA-unwinding enzymes which prefers partially unwound 3'-tailed substrates and can also unwind partial RNA/DNA and RNA/RNA duplexes in an ATP-dependent fashion. This enzyme is a member of the heterogeneous nuclear RNA-binding proteins and is also an element of the Ras signal transduction pathway. It binds specifically to the Ras-GTPase-activating protein by associating with its SH3 domain. Several alternatively spliced transcript variants of this gene have been described, but the full-length nature of some of these variants has not been determined. [provided by RefSeq, Jul 2008]

**Protein Families:** Druggable Genome

### Product images:



Coomassie blue staining of purified G3BP1 protein (Cat# [TP302692]). The protein was produced from HEK293T cells transfected with G3BP1 cDNA clone (Cat# [RC202692]) using MegaTran 2.0 (Cat# [TT210002]).