

Product datasheet for **TP302683M**

SERPINB3 (NM_006919) Human Recombinant Protein

Product data:

Product Type:	Recombinant Proteins
Description:	Recombinant protein of human serpin peptidase inhibitor, clade B (ovalbumin), member 3 (SERPINB3), 100 µg
Species:	Human
Expression Host:	HEK293T
Expression cDNA Clone or AA Sequence:	>RC202683 protein sequence Red =Cloning site Green =Tags(s)

MNSLSEANTKFMFDLFQQFRKSKENNIFYSPISITSALGMVLLGAKDNTAQQIKKVLHFDQVTENTTGKA
ATYHVDRSGNVHHQFQKLLTEFNKSTDAYELKIANKLFGEKTYLFLQEYLDAIKKFYQTSVESVDFANAP
EESRKKINSWVESQTNEKIKNLIPEGNIGSNTTLVLVNAIYFKGQWEKKFNKEDTKEEFWPNKNTYKSI
QMMRQYTSFHFASLEDVQAKVLEIPYKGDLSMIVLLPNEIDGLQKLEEKLTAEKLMEWTSLQNMRETRV
DLHLPRFKVEESYDLKDTLRTMGMVDIFNGDADLSGMTGSRGLVLSGVLHKAFVEVTEEGAEAAAATAVV
FGGSSPTSTNEEFHCNHPFLFFIRQNKTNSILFYGRFSSP

TRTRPLEQKLISEEDLAANDILDYKDDDDKV

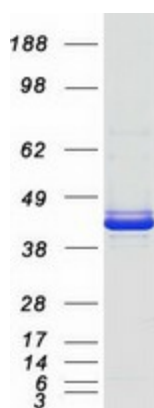
Tag:	C-Myc/DDK
Predicted MW:	44.4 kDa
Concentration:	>0.1 µg/µL as determined by microplate BCA method
Purity:	> 80% as determined by SDS-PAGE and Coomassie blue staining
Buffer:	25 mM Tris-HCl, 100 mM glycine, pH 7.3, 10% glycerol
Preparation:	Recombinant protein was captured through anti-DDK affinity column followed by conventional chromatography steps.
Note:	For testing in cell culture applications, please filter before use. Note that you may experience some loss of protein during the filtration process.
Storage:	Store at -80°C.
Stability:	Stable for 12 months from the date of receipt of the product under proper storage and handling conditions. Avoid repeated freeze-thaw cycles.
RefSeq:	<u>NP_008850</u>



[View online »](#)

Locus ID:	6317
UniProt ID:	P29508
RefSeq Size:	1793
Cytogenetics:	18q21.33
RefSeq ORF:	1170
Synonyms:	HsT1196; SCC; SCCA-1; SCCA-PD; SCCA1; SSCA1; T4-A
Summary:	May act as a papain-like cysteine protease inhibitor to modulate the host immune response against tumor cells. Also functions as an inhibitor of UV-induced apoptosis via suppression of the activity of c-Jun NH(2)-terminal kinase (JNK1).[UniProtKB/Swiss-Prot Function]
Protein Families:	Druggable Genome, Secreted Protein

Product images:



Coomassie blue staining of purified SERPINB3 protein (Cat# [TP302683]). The protein was produced from HEK293T cells transfected with SERPINB3 cDNA clone (Cat# [RC202683]) using MegaTran 2.0 (Cat# [TT210002]).