

Product datasheet for **TP302677M**

Grancalcin (GCA) (NM_012198) Human Recombinant Protein

Product data:

Product Type: Recombinant Proteins

Description: Recombinant protein of human grancalcin, EF-hand calcium binding protein (GCA), 100 µg

Species: Human

Expression Host: HEK293T

**Expression cDNA Clone
or AA Sequence:** >RC202677 protein sequence
Red=Cloning site **Green**=Tags(s)

MAYPGYGGGFGNFSIQVPGMQMGQPVPETGPAILLDGYS GPAYS DTYSSAGDSVYTYFSAVAGQDGEVDA
EELQRCLTQSGINGTYS PFSLET CRIMIAMLDRDHTGKMGFNAFKELWAALNAWKENFMTVDQDGS GTVE
HHEL RQAIGLMGYRLSPQTLTTIVKRYSKNGRIFDDYVACCVKLRALTDFFRKRDLQ QGSANFIYDDF
LQGTMAI

TRTRPLE**Q**KLISEEDLAANDILDYKDDDDKV

Tag: C-Myc/DDK

Predicted MW: 23.8 kDa

Concentration: >0.05 µg/µL as determined by microplate BCA method

Purity: > 80% as determined by SDS-PAGE and Coomassie blue staining

Buffer: 25 mM Tris-HCl, 100 mM glycine, pH 7.3, 10% glycerol

Preparation: Recombinant protein was captured through anti-DDK affinity column followed by conventional chromatography steps.

Note: For testing in cell culture applications, please filter before use. Note that you may experience some loss of protein during the filtration process.

Storage: Store at -80°C.

Stability: Stable for 12 months from the date of receipt of the product under proper storage and handling conditions. Avoid repeated freeze-thaw cycles.

RefSeq: [NP_036330](#)

Locus ID: 25801

UniProt ID: [P28676](#)



[View online »](#)

RefSeq Size: 3241

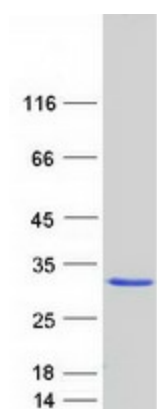
Cytogenetics: 2q24.2

RefSeq ORF: 651

Synonyms: GCL

Summary: This gene encodes a calcium-binding protein that is abundant in neutrophils and macrophages. In the absence of divalent cation, this protein localizes to the cytosolic fraction; with magnesium alone, it partitions with the granule fraction; and in the presence of magnesium and calcium, it associates with both the granule and membrane fractions. Alternative splicing and use of alternative promoters results in multiple transcript variants. [provided by RefSeq, Aug 2016]

Product images:



Coomassie blue staining of purified GCA protein (Cat# [TP302677]). The protein was produced from HEK293T cells transfected with GCA cDNA clone (Cat# [RC202677]) using MegaTran 2.0 (Cat# [TT210002]).