

## Product datasheet for **TP302659M**

### MRPS18C (NM\_016067) Human Recombinant Protein

#### Product data:

Product Type:	Recombinant Proteins
Description:	Recombinant protein of human mitochondrial ribosomal protein S18C (MRPS18C), nuclear gene encoding mitochondrial protein, 100 µg
Species:	Human
Expression Host:	HEK293T
Expression cDNA Clone or AA Sequence:	>RC202659 protein sequence <b>Red</b> =Cloning site <b>Green</b> =Tags(s)
	 MAAVAVCGGLGRKKLTHLVTAAVSLTHPGTHTVLWRRGCSQQVSSNEDLPISMENPYKEPLKKCILCGK HVDYKNVQLLSQFVSPFTGCIYGRHITGLCGKKQKEITKAIKRAQIMGFMPVTYKDPAYLKDPKVCNIRY RE  <b>TRTRPLEQKLISEEDLAANDILDYKDDDDKV</b>
Tag:	C-Myc/DDK
Predicted MW:	15.7 kDa
Concentration:	>0.05 µg/µL as determined by microplate BCA method
Purity:	> 80% as determined by SDS-PAGE and Coomassie blue staining
Buffer:	25 mM Tris-HCl, 100 mM glycine, pH 7.3, 10% glycerol
Preparation:	Recombinant protein was captured through anti-DDK affinity column followed by conventional chromatography steps.
Note:	For testing in cell culture applications, please filter before use. Note that you may experience some loss of protein during the filtration process.
Storage:	Store at -80°C.
Stability:	Stable for 12 months from the date of receipt of the product under proper storage and handling conditions. Avoid repeated freeze-thaw cycles.
RefSeq:	<u><a href="#">NP_057151</a></u>
Locus ID:	51023
UniProt ID:	<u><a href="#">Q9Y3D5</a></u>



[View online »](#)

RefSeq Size: 1101

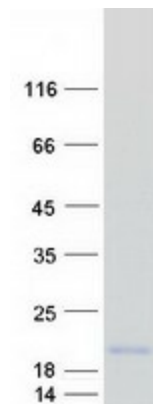
Cytogenetics: 4q21.23

RefSeq ORF: 426

Synonyms: CGI-134; MRP-S18-1; MRP-S18-c; MRPS18-1; mrps18-c; S18mt-c

**Summary:** Mammalian mitochondrial ribosomal proteins are encoded by nuclear genes and help in protein synthesis within the mitochondrion. Mitochondrial ribosomes (mitoribosomes) consist of a small 28S subunit and a large 39S subunit. They have an estimated 75% protein to rRNA composition compared to prokaryotic ribosomes, where this ratio is reversed. Another difference between mammalian mitoribosomes and prokaryotic ribosomes is that the latter contain a 5S rRNA. Among different species, the proteins comprising the mitoribosome differ greatly in sequence, and sometimes in biochemical properties, which prevents easy recognition by sequence homology. This gene encodes a 28S subunit protein that belongs to the ribosomal protein S18P family. The encoded protein is one of three that has significant sequence similarity to bacterial S18 proteins. The primary sequences of the three human mitochondrial S18 proteins are no more closely related to each other than they are to the prokaryotic S18 proteins. Pseudogenes corresponding to this gene are found on chromosomes 8p, 12p, 15q, and 22q. [provided by RefSeq, Jul 2008]

### Product images:



Coomassie blue staining of purified MRPS18C protein (Cat# [TP302659]). The protein was produced from HEK293T cells transfected with MRPS18C cDNA clone (Cat# [RC202659]) using MegaTran 2.0 (Cat# [TT210002]).