

## Product datasheet for TP302658

### RPS27L (NM\_015920) Human Recombinant Protein

#### Product data:

Product Type:	Recombinant Proteins
Description:	Recombinant protein of human ribosomal protein S27-like (RPS27L), 20 µg
Species:	Human
Expression Host:	HEK293T
Expression cDNA Clone or AA Sequence:	>RC202658 protein sequence <b>Red</b> =Cloning site <b>Green</b> =Tags(s)
	MPLARDLLHPSLEEEKKKHKEKRLVQSPNSYFMDVKCPGKYKITTVFSHAQTVWLCVGCSTVLCQPTGGK ARLTEGCSFRRKQH
	<b>TRTRPLEQKLISEEDLAANDILDYKDDDDKV</b>
Tag:	C-Myc/DDK
Predicted MW:	9.3 kDa
Concentration:	>0.05 µg/µL as determined by microplate BCA method
Purity:	> 80% as determined by SDS-PAGE and Coomassie blue staining
Buffer:	25 mM Tris-HCl, 100 mM glycine, pH 7.3, 10% glycerol
Preparation:	Recombinant protein was captured through anti-DDK affinity column followed by conventional chromatography steps.
Note:	For testing in cell culture applications, please filter before use. Note that you may experience some loss of protein during the filtration process.
Storage:	Store at -80°C.
Stability:	Stable for 12 months from the date of receipt of the product under proper storage and handling conditions. Avoid repeated freeze-thaw cycles.
RefSeq:	<a href="#">NP_057004</a>
Locus ID:	51065
UniProt ID:	<a href="#">Q71UM5</a>
RefSeq Size:	1084
Cytogenetics:	15q22.2



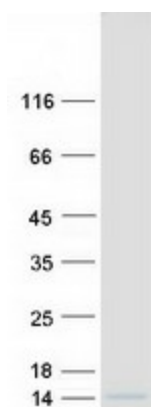
[View online »](#)

RefSeq ORF: 252

**Summary:** This gene encodes a protein sharing 96% amino acid similarity with ribosomal protein S27, which suggests the encoded protein may be a component of the 40S ribosomal subunit. [provided by RefSeq, Jul 2008]

**Protein Pathways:** Ribosome

### Product images:



Coomassie blue staining of purified RPS27L protein (Cat# TP302658). The protein was produced from HEK293T cells transfected with RPS27L cDNA clone (Cat# [RC202658]) using MegaTran 2.0 (Cat# [TT210002]).