

## Product datasheet for TP302650

### RING1 (NM\_002931) Human Recombinant Protein

#### Product data:

Product Type:	Recombinant Proteins
Description:	Recombinant protein of human ring finger protein 1 (RING1), 20 µg
Species:	Human
Expression Host:	HEK293T
Expression cDNA Clone or AA Sequence:	>RC202650 protein sequence <b>Red</b> =Cloning site <b>Green</b> =Tags(s)
	<p>MTTPANAQNASKTWELSLYELHRTPEAIMDGTIEAVSPRSLHSELMCPICLDMLKNTMTTKECLHRFCS DCIVTALRSGNKECPTCRKKLVSKRSLRPDPNFDALISKIYPSREEYEAHQDRVLIRLSRLHNQQALSSS IEEGLRMQAMHRAQRVRRPIPGSDQTTTMSGGEGEPGEGEGDGEDVSSDSAPDSAPGPAPKRPRGGGAGG SSVGTGGGGTGGVGGGAGSEDSGDRGGTLGGGTLPSPPPGAPSPPEPGGEIELVFRPHPLLVEKGEYQC TRYVKTGNATVDHLSKYLALRIALERRQQEAGEPGPGGGASDTGGPDGCGGEGGGAGGGDGPEEPAL PSLEGVSEKQYTIYIAPGGGAFTTLNGLSLTELVNEKFWKVSRLPLELCYAPTKDPK</p> <p><b>TRTRPLEQKLISEEDLAANDILDYKDDDDKV</b></p>
Tag:	C-Myc/DDK
Predicted MW:	42.2 kDa
Concentration:	>0.05 µg/µL as determined by microplate BCA method
Purity:	> 80% as determined by SDS-PAGE and Coomassie blue staining
Buffer:	25 mM Tris-HCl, 100 mM glycine, pH 7.3, 10% glycerol
Preparation:	Recombinant protein was captured through anti-DDK affinity column followed by conventional chromatography steps.
Note:	For testing in cell culture applications, please filter before use. Note that you may experience some loss of protein during the filtration process.
Storage:	Store at -80°C.
Stability:	Stable for 12 months from the date of receipt of the product under proper storage and handling conditions. Avoid repeated freeze-thaw cycles.
RefSeq:	<a href="#">NP_002922</a>
Locus ID:	6015



[View online »](#)

UniProt ID: [Q0658Z](#), [A0A1U9X8F2](#)

RefSeq Size: 1744

Cytogenetics: 6p21.32

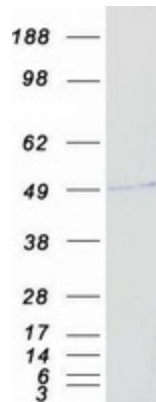
RefSeq ORF: 1218

Synonyms: RING1A; RNF1

**Summary:** This gene belongs to the RING finger family, members of which encode proteins characterized by a RING domain, a zinc-binding motif related to the zinc finger domain. The gene product can bind DNA and can act as a transcriptional repressor. It is associated with the multimeric polycomb group protein complex. The gene product interacts with the polycomb group proteins BMI1, EDR1, and CBX4, and colocalizes with these proteins in large nuclear domains. It interacts with the CBX4 protein via its glycine-rich C-terminal domain. The gene maps to the HLA class II region, where it is contiguous with the RING finger genes FABGL and HKE4. [provided by RefSeq, Jul 2008]

**Protein Families:** Druggable Genome, Transcription Factors

### Product images:



Coomassie blue staining of purified RING1 protein (Cat# TP302650). The protein was produced from HEK293T cells transfected with RING1 cDNA clone (Cat# [RC202650]) using MegaTran 2.0 (Cat# [TT210002]).