

Product datasheet for TP302640L

MAD2L1 binding protein (MAD2L1BP) (NM_014628) Human Recombinant Protein

Product data:

Product Type:	Recombinant Proteins
Description:	Recombinant protein of human MAD2L1 binding protein (MAD2L1BP), transcript variant 2, 1 mg
Species:	Human
Expression Host:	HEK293T
Expression cDNA Clone or AA Sequence:	>RC202640 protein sequence Red =Cloning site Green =Tags(s)

MAAPEAEVLSSAAVPDLEWYEKSEETHASQIELLETSSSTQEPLNASEAFCPRDCMVPVWFGPVSQEGCC
QFTCELLKHIMYQRQLPLPYEQLKHFYRKPSQAEEMLKKKPRATTEVSSRKCCQALAELESVLSHLED
FFARTLVPRVLILLGGNALSPKEFYELDLSLLAPYSVDQSLSTAACLRRLFRAIFMADAFSELQAPPLMG
TVVMAQGHRNCGEDWFRPKLNRYRVP SRGHKLTVTLSGCRPSIRTTAWEDYIWFQAPVTFKGFRE

TRTRPLEQKLISEEDLAANDILDYKDDDDKV

Tag:	C-Myc/DDK
Predicted MW:	30.9 kDa
Concentration:	>0.05 µg/µL as determined by microplate BCA method
Purity:	> 80% as determined by SDS-PAGE and Coomassie blue staining
Buffer:	25 mM Tris-HCl, 100 mM glycine, pH 7.3, 10% glycerol
Preparation:	Recombinant protein was captured through anti-DDK affinity column followed by conventional chromatography steps.
Note:	For testing in cell culture applications, please filter before use. Note that you may experience some loss of protein during the filtration process.
Storage:	Store at -80°C.
Stability:	Stable for 12 months from the date of receipt of the product under proper storage and handling conditions. Avoid repeated freeze-thaw cycles.
RefSeq:	NP_055443
Locus ID:	9587



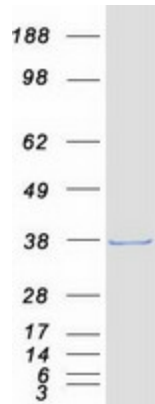
[View online »](#)

UniProt ID: [Q15013](#)
RefSeq Size: 1283
Cytogenetics: 6p21.1
RefSeq ORF: 822
Synonyms: CMT2

Summary: The protein encoded by this gene was identified as a binding protein of the MAD2 mitotic arrest deficient-like 1 (MAD2/MAD2L1). MAD2 is a key component of the spindle checkpoint that delays the onset of anaphase until all the kinetochores are attached to the spindle. This protein may interact with the spindle checkpoint and coordinate cell cycle events in late mitosis. Alternatively spliced transcript variants encoding distinct isoforms have been observed. [provided by RefSeq, Jul 2008]

Protein Families: Druggable Genome

Product images:



Coomassie blue staining of purified MAD2L1BP protein (Cat# [TP302640]). The protein was produced from HEK293T cells transfected with MAD2L1BP cDNA clone (Cat# [RC202640]) using MegaTran 2.0 (Cat# [TT210002]).