

Product datasheet for TP302631

CRMP5 (DPYSL5) (NM_020134) Human Recombinant Protein

Product data:

| | |
|---------------------------------------|---|
| Product Type: | Recombinant Proteins |
| Description: | Recombinant protein of human dihydropyrimidinase-like 5 (DPYSL5), 20 µg |
| Species: | Human |
| Expression Host: | HEK293T |
| Expression cDNA Clone or AA Sequence: | >RC202631 protein sequence Red=Cloning site Green=Tags(s) |

MLANSASVRILIKGGKVVNDCTHEADVYIENGIQQVGRELMIPGGAKVIDATGKLVIPGGIDTSTHFH
QTFMNATCVDDFYHGTKAALVGGTTMIIGHVLPDKETSLVDAYEKCRGLADPKVCCDYALHVGITWWAPK
VKAEMETLVREKGVNSFQMFMTYKDLMLRDESELYQVLHACKDIGAIARVHAENGELVAEGAKEALDLGI
TGPEGIEISRPEELEAEATHRVITIANRTHCPIYLVNVSSISAGDVIAAAKMQGKVVLAETTTAATLTG
LHYYHQDWSHAAAYVTPPLRLDNTSTYLMSSLANDTLNIVASDHRPFTTKQKAMGKEDFTKIPHGVSG
VQDRMSVIWERG VVGGKMDENRFVAVTSSNAKLLNLYPRKGRIIPGADADVVWDPEATKTISASTQVQ
GGDFNLNENMRCHGVPLVTISRGRVYENGVMCAEGTGKFCPLRSFPDVTYKLVQREKTLKVRGVDRT
PYLGDVAVVHHPGKEMGTPLADTPTRPVTRHGGMRDLHESSFSLSGSQIDDHVPKRASARILAPPGGRS
SGIW

TRTRPLEQKLISEEDLAANDILDYKDDDDKV

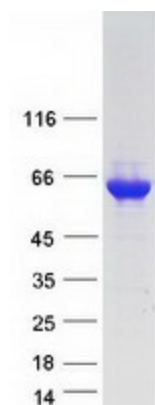
| | |
|----------------|--|
| Tag: | C-Myc/DDK |
| Predicted MW: | 61.2 kDa |
| Concentration: | >0.05 µg/µL as determined by microplate BCA method |
| Purity: | > 80% as determined by SDS-PAGE and Coomassie blue staining |
| Buffer: | 25 mM Tris-HCl, 100 mM glycine, pH 7.3, 10% glycerol |
| Preparation: | Recombinant protein was captured through anti-DDK affinity column followed by conventional chromatography steps. |
| Note: | For testing in cell culture applications, please filter before use. Note that you may experience some loss of protein during the filtration process. |
| Storage: | Store at -80°C. |



[View online »](#)

| | |
|--------------------------|--|
| Stability: | Stable for 12 months from the date of receipt of the product under proper storage and handling conditions. Avoid repeated freeze-thaw cycles. |
| RefSeq: | NP_064519 |
| Locus ID: | 56896 |
| UniProt ID: | Q9BPU6 |
| RefSeq Size: | 5225 |
| Cytogenetics: | 2p23.3 |
| RefSeq ORF: | 1692 |
| Synonyms: | CRAM; CRMP-5; CRMP5; CV2; Ulip6 |
| Summary: | This gene encodes a member of the CRMP (collapsing response mediator protein) family thought to be involved in neural development. Antibodies to the encoded protein were found in some patients with neurologic symptoms who had paraneoplastic syndrome. A pseudogene of this gene is found on chromosome 11. Multiple alternatively spliced variants, encoding the same protein, have been identified. [provided by RefSeq, Dec 2011] |
| Protein Pathways: | Axon guidance |

Product images:



Coomassie blue staining of purified DPYSL5 protein (Cat# TP302631). The protein was produced from HEK293T cells transfected with DPYSL5 cDNA clone (Cat# [RC202631]) using MegaTran 2.0 (Cat# [TT210002]).