

## Product datasheet for TP302620

### CSRP2BP (KAT14) (NM\_177926) Human Recombinant Protein

#### Product data:

Product Type:	Recombinant Proteins
Description:	Recombinant protein of human CSRP2 binding protein (CSRP2BP), transcript variant 2, 20 µg
Species:	Human
Expression Host:	HEK293T
Expression cDNA Clone or AA Sequence:	>RC202620 protein sequence Red=Cloning site Green=Tags(s)

MLAMYNLSLEGSGRQGYFRWKEDICAFIEKHWTFLGNRKKSTWWSTVAGCLSVGSPMYFRSGAQEFGE  
PGWWKLVHNKPPTMKPEGEKLSASTLKIKAAASKPTLDPIITVEGLRKRASRNPVESAMELKEKRSTQEA  
KDIRRAQKEAAGFLDRSTSSTPVKFSRGRRPDVILEKGEVIDFSSLSSSDRTPLTSPSPSLDFSAAG  
TPASHSATPSLLSEADLIPDVMPPQALFHDDDEMEGDGVIDPGMEYVPPPAGSVASGPVVGGRKKVRGPE  
QIKQEVESEEEKPDRMDIDSEDTDSNTSLQTRAREKRKPQLEKDTKPKEPRYTPVSIYEEKLLLKRLEAC  
PGAVAMTPEARLKRKLIVRQAKRDRGLPLFDLDQVNAALLLVLDGIYGAKEGGISRLPAGQATYRTTCQ  
DFRILDYQTSLSRKGFRHQTTKFLYRLVGSSEMAVDQSIYSPYTSRILKPYIRRDYETKPPKLQLLSQ  
IRSHLHRSDPHWTPEPDALDYCYVRPNHIPTINSMCQEFFWPGIDLSECLQYPDFSVVWLYKKVIIAFG  
FMVPDVKYNEAYISFLVHPEWRRAGIATFMIYHLIQTCMGKDVTLHVSASNPAMLLYQKFGFKTEEVVL  
DFYDKYYPLESTECKHAFFLRLRR

TRTRPLEQKLISEEDLAANDILDYKDDDDKV

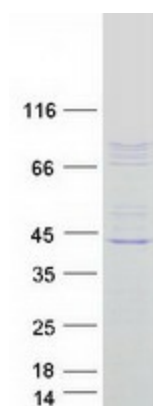
Tag:	C-Myc/DDK
Predicted MW:	74.1 kDa
Concentration:	>0.05 µg/µL as determined by microplate BCA method
Purity:	> 80% as determined by SDS-PAGE and Coomassie blue staining
Buffer:	25 mM Tris-HCl, 100 mM glycine, pH 7.3, 10% glycerol
Preparation:	Recombinant protein was captured through anti-DDK affinity column followed by conventional chromatography steps.
Note:	For testing in cell culture applications, please filter before use. Note that you may experience some loss of protein during the filtration process.
Storage:	Store at -80°C.



[View online »](#)

<b>Stability:</b>	Stable for 12 months from the date of receipt of the product under proper storage and handling conditions. Avoid repeated freeze-thaw cycles.
<b>RefSeq:</b>	<a href="#">NP_808779</a>
<b>Locus ID:</b>	57325
<b>UniProt ID:</b>	<a href="#">Q9H8E8</a>
<b>RefSeq Size:</b>	3137
<b>Cytogenetics:</b>	20p11.23
<b>RefSeq ORF:</b>	1962
<b>Synonyms:</b>	CRP2 binding partner; CRP2 binding protein; CRP2BP; CSRP2 binding protein; cysteine rich protein 2 binding protein; dj717M23.1; MGC15388; PRO1194
<b>Summary:</b>	CSRP2 is a protein containing two LIM domains, which are double zinc finger motifs found in proteins of diverse function. CSRP2 and some related proteins are thought to act as protein adapters, bridging two or more proteins to form a larger protein complex. The protein encoded by this gene binds to one of the LIM domains of CSRP2 and contains an acetyltransferase domain. Although the encoded protein has been detected in the cytoplasm, it is predominantly a nuclear protein. Alternatively spliced transcript variants have been described. [provided by RefSeq, Jun 2011]

### Product images:



Coomassie blue staining of purified CSRP2BP protein (Cat# TP302620). The protein was produced from HEK293T cells transfected with CSRP2BP cDNA clone (Cat# [RC202620]) using MegaTran 2.0 (Cat# [TT210002]).