

## Product datasheet for **TP302601L**

### **METTL7A (NM\_014033) Human Recombinant Protein**

#### **Product data:**

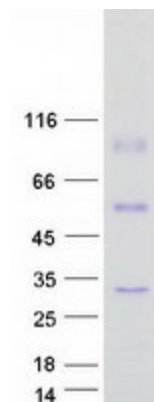
Product Type:	Recombinant Proteins
Description:	Recombinant protein of human methyltransferase like 7A (METTL7A), 1 mg
Species:	Human
Expression Host:	HEK293T
Expression cDNA Clone or AA Sequence:	>RC202601 protein sequence <b>Red</b> =Cloning site <b>Green</b> =Tags(s)
	MELTIFILRLAIYILTFPLYLLNFLGLWSWICKKWFYFLVRFTVIYNEQMASKKRELF SNLQEFAGPSG KLSLLEVGC GTGANFKFYPPGCRVTCIDPNPNFEKFLIKSIAENRHLQFERFVVAAGENMHQVADGSVDV VVCTLVLC SVKNQERILREVCRLRPGGAFYFMEHVAAECSTWNYFWQQVLDPAWHLLFDGCNLTRESW K ALERASFSKLKLQHIQAPLSWELVRPHIYGAVK
	<b>TRTRPLEQKLISEEDLAANDILDYKDDDDKV</b>
Tag:	C-Myc/DDK
Predicted MW:	28.1 kDa
Concentration:	>0.05 µg/µL as determined by microplate BCA method
Purity:	> 80% as determined by SDS-PAGE and Coomassie blue staining
Buffer:	25 mM Tris-HCl, 100 mM glycine, pH 7.3, 10% glycerol
Preparation:	Recombinant protein was captured through anti-DDK affinity column followed by conventional chromatography steps.
Note:	For testing in cell culture applications, please filter before use. Note that you may experience some loss of protein during the filtration process.
Storage:	Store at -80°C.
Stability:	Stable for 12 months from the date of receipt of the product under proper storage and handling conditions. Avoid repeated freeze-thaw cycles.
RefSeq:	<u><a href="#">NP_054752</a></u>
Locus ID:	25840



[View online »](#)

UniProt ID:	<u>Q9H8H3</u>
RefSeq Size:	3390
Cytogenetics:	12q13.12
RefSeq ORF:	732
Synonyms:	AAM-B; AAMB
Summary:	Probable methyltransferase.[UniProtKB/Swiss-Prot Function]
Protein Families:	Druggable Genome, Transmembrane

### Product images:



Coomassie blue staining of purified METTL7A protein (Cat# [TP302601]). The protein was produced from HEK293T cells transfected with METTL7A cDNA clone (Cat# [RC202601]) using MegaTran 2.0 (Cat# [TT210002]).