

## Product datasheet for **TP302601**

### **METTL7A (NM\_014033) Human Recombinant Protein**

#### **Product data:**

**Product Type:** Recombinant Proteins

**Description:** Recombinant protein of human methyltransferase like 7A (METTL7A), 20 µg

**Species:** Human

**Expression Host:** HEK293T

**Expression cDNA Clone  
or AA Sequence:** >RC202601 protein sequence  
**Red**=Cloning site **Green**=Tags(s)

MELTIFILRLAIYILTFPLYLLNFLGLWSWICKKWFPYFLVRFTVIYNEQMASKKRELFNSNLQEFAGPSG  
KLSLLEVGCCTGANFKFYPPGCRVTCIDPNPNFEKFLIKSIAENRHLQFERFVVAAGENMHQVADGSVDV  
VVCTLVLCVKNQERILREVCRLRPGGAFYFMEHVAAECSTWNYFWQQVLDPAWHLLFDGCNLTRESWK  
ALERASFSKLLQHIQAPLSWELVRPHIYGAVK

**TRTRPLEQKLISEEDLAANDILDYKDDDDKV**

**Tag:** C-Myc/DDK

**Predicted MW:** 28.1 kDa

**Concentration:** >0.05 µg/µL as determined by microplate BCA method

**Purity:** > 80% as determined by SDS-PAGE and Coomassie blue staining

**Buffer:** 25 mM Tris-HCl, 100 mM glycine, pH 7.3, 10% glycerol

**Preparation:** Recombinant protein was captured through anti-DDK affinity column followed by conventional chromatography steps.

**Note:** For testing in cell culture applications, please filter before use. Note that you may experience some loss of protein during the filtration process.

**Storage:** Store at -80°C.

**Stability:** Stable for 12 months from the date of receipt of the product under proper storage and handling conditions. Avoid repeated freeze-thaw cycles.

**RefSeq:** [NP\\_054752](#)

**Locus ID:** 25840

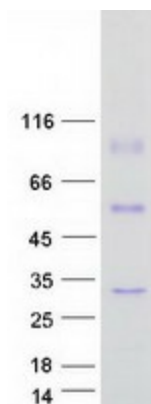
**UniProt ID:** [Q9H8H3](#), [A0A024R118](#)



[View online »](#)

RefSeq Size:	3390
Cytogenetics:	12q13.12
RefSeq ORF:	732
Synonyms:	AAM-B; AAMB
Summary:	Probable methyltransferase.[UniProtKB/Swiss-Prot Function]
Protein Families:	Druggable Genome, Transmembrane

### Product images:



Coomassie blue staining of purified METTL7A protein (Cat# TP302601). The protein was produced from HEK293T cells transfected with METTL7A cDNA clone (Cat# [RC202601]) using MegaTran 2.0 (Cat# [TT210002]).