

## Product datasheet for **TP302590M**

### **S100 calcium binding protein A14 (S100A14) (NM\_020672) Human Recombinant Protein**

#### Product data:

Product Type:	Recombinant Proteins
Description:	Recombinant protein of human S100 calcium binding protein A14 (S100A14), 100 µg
Species:	Human
Expression Host:	HEK293T
Expression cDNA Clone or AA Sequence:	>RC202590 protein sequence <b>Red</b> =Cloning site <b>Green</b> =Tags(s)
	MGQCRSANAEDAQEFSDVERAIETLIKNFHQYSVEGGKETLTPSELRLDVTQQLPHLMPSNCGLEEKIAN LGSCNDSKLEFRSFWELIGEAAKSVKLERPVRGH
	<b>TRTRPLEQKLISEEDLAANDILDYKDDDDKV</b>
Tag:	C-Myc/DDK
Predicted MW:	11.5 kDa
Concentration:	>0.05 µg/µL as determined by microplate BCA method
Purity:	> 80% as determined by SDS-PAGE and Coomassie blue staining
Buffer:	25 mM Tris-HCl, 100 mM glycine, pH 7.3, 10% glycerol
Preparation:	Recombinant protein was captured through anti-DDK affinity column followed by conventional chromatography steps.
Note:	For testing in cell culture applications, please filter before use. Note that you may experience some loss of protein during the filtration process.
Storage:	Store at -80°C.
Stability:	Stable for 12 months from the date of receipt of the product under proper storage and handling conditions. Avoid repeated freeze-thaw cycles.
RefSeq:	<a href="#">NP_065723</a>
Locus ID:	57402
UniProt ID:	<a href="#">Q9HCY8</a>
RefSeq Size:	1075
Cytogenetics:	1q21.3



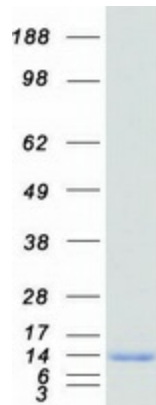
[View online »](#)

RefSeq ORF: 312

Synonyms: BCMP84; S100A15

**Summary:** This gene encodes a member of the S100 protein family which contains an EF-hand motif and binds calcium. The gene is located in a cluster of S100 genes on chromosome 1. Levels of the encoded protein have been found to be lower in cancerous tissue and associated with metastasis suggesting a tumor suppressor function (PMID: 19956863, 19351828). [provided by RefSeq, Dec 2011]

### Product images:



Coomassie blue staining of purified S100A14 protein (Cat# [TP302590]). The protein was produced from HEK293T cells transfected with S100A14 cDNA clone (Cat# [RC202590]) using MegaTran 2.0 (Cat# [TT210002]).