

Product datasheet for **TP302573**

IGFBP2 (NM_000597) Human Recombinant Protein

Product data:

Product Type:	Recombinant Proteins
Description:	Recombinant protein of human insulin-like growth factor binding protein 2, 36kDa (IGFBP2), 20 µg
Species:	Human
Expression Host:	HEK293T
Expression cDNA Clone or AA Sequence:	>RC202573 representing NM_000597 Red =Cloning site Green =Tags(s)
	MLPRVGC PALPLPPP LLLPL LLLLLLGASGGGGGARA E V L F R C P P C T P E R L A A C G P P P V A P P A A V A A V A G G A R M P C A E L V R E P G C G C C S V C A R L E G E A C G V Y T P R C G Q G L R C Y P H P G S E L P L Q A L V M G E G T C E K R R D A E Y G A S P E Q V A D N G D D H S E G G L V E N H V D S T M N M L G G G G S A G R K P L K S G M K E L A V F R E K V T E Q H R Q M G K G G K H H L G L E E P K K L R P P P A R T P C Q Q E L D Q V L E R I S T M R L P D E R G P L E H L Y S L H I P N C D K H G L Y N L K Q C K M S L N G Q R G E C W C V N P N T G K L I Q G A P T I R G D P E C H L F Y N E Q Q E A R G V H T Q R M Q T R T R P L E Q K L I S E E D L A A N D I L D Y K D D D D K V
Tag:	C-Myc/DDK
Predicted MW:	35 kDa
Concentration:	>0.05 µg/µL as determined by microplate BCA method
Purity:	> 80% as determined by SDS-PAGE and Coomassie blue staining
Buffer:	25 mM Tris-HCl, 100 mM glycine, pH 7.3, 10% glycerol
Preparation:	Recombinant protein was captured through anti-DDK affinity column followed by conventional chromatography steps.
Note:	For testing in cell culture applications, please filter before use. Note that you may experience some loss of protein during the filtration process.
Storage:	Store at -80°C.
Stability:	Stable for 12 months from the date of receipt of the product under proper storage and handling conditions. Avoid repeated freeze-thaw cycles.
RefSeq:	<u>NP_000588</u>
Locus ID:	3485



[View online »](#)

UniProt ID: [P18065](#)

RefSeq Size: 1439

Cytogenetics: 2q35

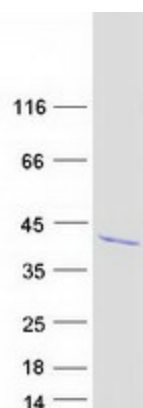
RefSeq ORF: 984

Synonyms: IBP2; IGF-BP53

Summary: The protein encoded by this gene is one of six similar proteins that bind insulin-like growth factors I and II (IGF-I and IGF-II). The encoded protein can be secreted into the bloodstream, where it binds IGF-I and IGF-II with high affinity, or it can remain intracellular, interacting with many different ligands. High expression levels of this protein promote the growth of several types of tumors and may be predictive of the chances of recovery of the patient. Several transcript variants, one encoding a secreted isoform and the others encoding nonsecreted isoforms, have been found for this gene. [provided by RefSeq, Sep 2015]

Protein Families: Adult stem cells, Druggable Genome, Embryonic stem cells, ES Cell Differentiation/IPS, Secreted Protein

Product images:



Coomassie blue staining of purified IGFBP2 protein (Cat# TP302573). The protein was produced from HEK293T cells transfected with IGFBP2 cDNA clone (Cat# [RC202573]) using MegaTran 2.0 (Cat# [TT210002]).