

Product datasheet for TP302567M

EIF4A3 (NM_014740) Human Recombinant Protein

Product data:

Product Type:	Recombinant Proteins
Description:	Recombinant protein of human eukaryotic translation initiation factor 4A, isoform 3 (EIF4A3), 100 µg
Species:	Human
Expression Host:	HEK293T
Expression cDNA Clone or AA Sequence:	>RC202567 protein sequence Red =Cloning site Green =Tags(s)

MATTATMATSGSARKRLLKEEDMTKVEFETSEEVDVTPTFDTMGLREDLLRGIYAYGFKEKPSAIQQRAIK
QIIKGRDVIAQSQSGTGKTATFSISVLQCLDIQVRETQALILAPTRELAVQIQKGLLALGDYMNQVQCHAC
IGGTNVGEDIRKLDYQGHVAGTPGRVDFMIRRRSLRTRAIKMLVLDEADEMLNKGFKQIYDVYRYLPP
ATQVVLISATLPHEILEMTNKFMTDPIRILVKRDELTLLEGIKQFFVAVEREEWKFDLTLCDLYDTLITQA
VIFCNTKRKVDWLTEKMREANFTVSSMHGDMQPQKERESIMKEFRSGASRVLISTDVWARGLDVPPQVSLII
NYDLPNNRELYIHRIGRSGRYGRKGVAINFVKNDDIRILRDIEQYYSTQIDEMPMNVADLI

TRTRPLEQKLISEEDLAANDILDYKDDDDKV

Tag:	C-Myc/DDK
Predicted MW:	46.7 kDa
Concentration:	>0.05 µg/µL as determined by microplate BCA method
Purity:	> 80% as determined by SDS-PAGE and Coomassie blue staining
Buffer:	25 mM Tris-HCl, 100 mM glycine, pH 7.3, 10% glycerol
Preparation:	Recombinant protein was captured through anti-DDK affinity column followed by conventional chromatography steps.
Note:	For testing in cell culture applications, please filter before use. Note that you may experience some loss of protein during the filtration process.
Storage:	Store at -80°C.
Stability:	Stable for 12 months from the date of receipt of the product under proper storage and handling conditions. Avoid repeated freeze-thaw cycles.
RefSeq:	<u>NP_055555</u>



[View online »](#)

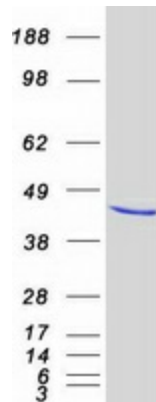
Locus ID:	9775
UniProt ID:	P38919 , A0A024R8W0
RefSeq Size:	1734
Cytogenetics:	17q25.3
RefSeq ORF:	1233
Synonyms:	DDX48; eIF-4A-III; eIF4A-III; eIF4AIII; Fal1; MUK34; NMP265; NUK34; RCPS

Summary: This gene encodes a member of the DEAD box protein family. DEAD box proteins, characterized by the conserved motif Asp-Glu-Ala-Asp (DEAD), are putative RNA helicases. They are implicated in a number of cellular processes involving alteration of RNA secondary structure, such as translation initiation, nuclear and mitochondrial splicing, and ribosome and spliceosome assembly. Based on their distribution patterns, some members of this family are believed to be involved in embryogenesis, spermatogenesis, and cellular growth and division. The protein encoded by this gene is a nuclear matrix protein. Its amino acid sequence is highly similar to the amino acid sequences of the translation initiation factors eIF4AI and eIF4AII, two other members of the DEAD box protein family. [provided by RefSeq, Jul 2008]

Protein Families: Druggable Genome

Protein Pathways: Spliceosome

Product images:



Coomassie blue staining of purified EIF4A3 protein (Cat# [TP302567]). The protein was produced from HEK293T cells transfected with EIF4A3 cDNA clone (Cat# [RC202567]) using MegaTran 2.0 (Cat# [TT210002]).