

Product datasheet for TP302560

TTC11 (FIS1) (NM_016068) Human Recombinant Protein

Product data:

Product Type: Recombinant Proteins

Description: Recombinant protein of human fission 1 (mitochondrial outer membrane) homolog (*S. cerevisiae*) (FIS1), nuclear gene encoding mitochondrial protein, 20 µg

Species: Human

Expression Host: HEK293T

Expression cDNA Clone or AA Sequence: >RC202560 protein sequence
Red=Cloning site **Green**=Tags(s)

MEAVLNELVSVEDLLKFEKKFQSEKAAGSVSKSTQFEYAWCLVRSKYND DIRKGIVLLEELLPKGSKEEQ
RDYVFLAVGNYRLKEYEKALKYVRGLLQTEPQNNQAKELERLIDKAMKKDGLVGM AIVGGMALGVAGLA
GLIGLAVSKSKS

TRTRPLEQKLISEEDLAANDILDYKDDDDKV

Tag: C-Myc/DDK

Predicted MW: 16.8 kDa

Concentration: >0.05 µg/µL as determined by microplate BCA method

Purity: > 80% as determined by SDS-PAGE and Coomassie blue staining

Buffer: 25 mM Tris-HCl, 100 mM glycine, pH 7.3, 10% glycerol

Preparation: Recombinant protein was captured through anti-DDK affinity column followed by conventional chromatography steps.

Note: For testing in cell culture applications, please filter before use. Note that you may experience some loss of protein during the filtration process.

Storage: Store at -80°C.

Stability: Stable for 12 months from the date of receipt of the product under proper storage and handling conditions. Avoid repeated freeze-thaw cycles.

RefSeq: [NP_057152](#)

Locus ID: 51024

UniProt ID: [Q9Y3D6](#)



[View online »](#)

RefSeq Size: 785

Cytogenetics: 7q22.1

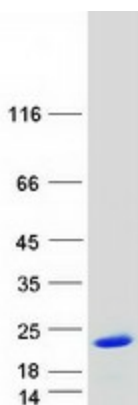
RefSeq ORF: 456

Synonyms: CGI-135; TTC11

Summary: The balance between fission and fusion regulates the morphology of mitochondria. TTC11 is a component of a mitochondrial complex that promotes mitochondrial fission (James et al., 2003 [PubMed 12783892]).[supplied by OMIM, Mar 2008]

Protein Families: Transmembrane

Product images:



Coomassie blue staining of purified FIS1 protein (Cat# TP302560). The protein was produced from HEK293T cells transfected with FIS1 cDNA clone (Cat# [RC202560]) using MegaTran 2.0 (Cat# [TT210002]).