

Product datasheet for **TP302558M**

KREMEN2 (NM_024507) Human Recombinant Protein

Product data:

Product Type:	Recombinant Proteins
Description:	Recombinant protein of human kringle containing transmembrane protein 2 (KREMEN2), transcript variant 2, 100 µg
Species:	Human
Expression Host:	HEK293T
Expression cDNA	>RC202558 protein sequence
Clone or AA Sequence:	Red=Cloning site Green=Tags(s)

MGTQALQGFLFLFLPLLQPRGASAGSLHSPGLSECFQVNGADYRGHQNRTGPRGAGRPCLFWDQTQQHS
YSSASDPHGRWGLGAHNFCRNPDGDVQPWCYVAETEEGIYWRYCDIPSCHMPGYLGCFVDSGAPPALSGP
SGTSTKLTVQVCLRFCRMKGYQLAGVEAGYACFCGSESDLARGRLAPATDCDQICFGHPGQLCGGDGRLG
VYEVSVGSCQGNWTAPQGVYSPDFPDEYGPDRNCSWALGPPGAALELTFRLFELADPRDRLELRDAASG
SLLRAFDGARPPPSGPLRLGTAAALLTFRSDARGHAQGFALTYRGLQDAAEDPEAPEGSAQTPAAPLDGA
NVSCSPRPGAPPAIAGGAVCWLRKGP RRWGLPGAPGEAGLCGTNSPEGWPCAPPGT PRLRLVLP RATGL

TRTRPLEQKLISEEDLAANDILDYKDDDDKV

Tag:	C-Myc/DDK
Predicted MW:	42.3 kDa
Concentration:	>0.05 µg/µL as determined by microplate BCA method
Purity:	> 80% as determined by SDS-PAGE and Coomassie blue staining
Buffer:	25 mM Tris-HCl, 100 mM glycine, pH 7.3, 10% glycerol
Preparation:	Recombinant protein was captured through anti-DDK affinity column followed by conventional chromatography steps.
Note:	For testing in cell culture applications, please filter before use. Note that you may experience some loss of protein during the filtration process.
Storage:	Store at -80°C.
Stability:	Stable for 12 months from the date of receipt of the product under proper storage and handling conditions. Avoid repeated freeze-thaw cycles.
RefSeq:	<u>NP_078783</u>



[View online »](#)

Locus ID: 79412

UniProt ID: [Q8NCW0](#), [Q53F67](#)

RefSeq Size: 1989

Cytogenetics: 16p13.3

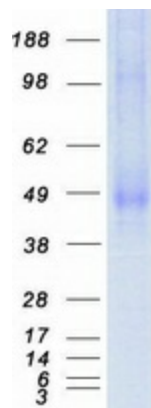
RefSeq ORF: 1260

Synonyms: KRM2

Summary: This gene encodes a high-affinity dickkopf homolog 1 (DKK1) transmembrane receptor. A similar protein in mouse functions interacts with with DKK1 to block wntless (WNT)/beta-catenin signaling. The encoded protein forms a ternary membrane complex with DKK1 and the WNT receptor lipoprotein receptor-related protein 6 (LRP6), and induces rapid endocytosis and removal of LRP6 from the plasma membrane. It contains extracellular kringle, WSC, and CUB domains. Alternatively spliced transcript variants encoding distinct isoforms have been observed for this gene. [provided by RefSeq, Dec 2011]

Protein Families: Druggable Genome, Transmembrane

Product images:



Coomassie blue staining of purified KREMEN2 protein (Cat# [TP302558]). The protein was produced from HEK293T cells transfected with KREMEN2 cDNA clone (Cat# [RC202558]) using MegaTran 2.0 (Cat# [TT210002]).