

Product datasheet for **TP302532M**

Mesothelin (MSLN) (NM_005823) Human Recombinant Protein

Product data:

Product Type:	Recombinant Proteins
Description:	Recombinant protein of human mesothelin (MSLN), transcript variant 1, 100 µg
Species:	Human
Expression Host:	HEK293T
Expression cDNA Clone or AA Sequence:	>Peptide sequence encoded by RC202532 Blue=ORF Red=Cloning site Green=Tag(s)

MALPTARPLLGSCGTPALGSLFLFSLGWVQPSRTLGETGQAAPLDGVLANPPNISSLSPRQLLGFP
CAEVSGLSTERVRELAVALAQKNVKLSTEQLRCLAHRLSEPPEDLDALPLDLLFLNPDADFSGPQACTR
FFSRITKANVDLLPRGAPERQRLPAALACWGVRSLLSEADVRLGGLACDLPGRFVAESAEVLLPRL
VSCPGPLDQDQQAARAALQGGGPPYGPSTWSVSTMDALRGLLPVLGQPIIRSIPQGIVAAWRQRSSR
DPSWRQPRTLPRFRREVEKTACPSGKKAREIDESLIFYKKWELEACVDAALLATQMDRVNAIPFTY
EQLDVLKHKLDELYPQGYPESVIQHLGYLFLKMSPEDIRKWNVTSLETALKALLEVNKGHEMSPQVATLI
DRFVKGRGQLDKDTLDTLAFYPGYLCSLSPEELSSVPPSSIWAVRPQDLDTCDPRQLDVLVYPKARLAF
QNMNGSEYFVKIQSFLGGAPTEDLKALSQQNVSMDLATFMKLRTDAVLPLTVAEVQKLLGPHVEGLKAE
ERHRPVRDWILRQRQDDLDTLGLGLQGGIPNGYLVLDLSVQEALSGTPCLLGGPVLTVLALLLASTLA
TRTRPLEQKLISEEDLAANDILDYKDDDDKV

Recombinant protein using RC202532 also available, [TP302532](#)

Tag:	C-Myc/DDK
Predicted MW:	62.7 kDa
Concentration:	>0.05 µg/µL as determined by microplate BCA method
Purity:	> 80% as determined by SDS-PAGE and Coomassie blue staining
Buffer:	25 mM Tris-HCl, 100 mM glycine, pH 7.3, 10% glycerol
Preparation:	Recombinant protein was captured through anti-DDK affinity column followed by conventional chromatography steps.
Note:	For testing in cell culture applications, please filter before use. Note that you may experience some loss of protein during the filtration process.
Storage:	Store at -80°C.



[View online »](#)

Stability: Stable for 12 months from the date of receipt of the product under proper storage and handling conditions. Avoid repeated freeze-thaw cycles.

RefSeq: [NP_005814](#)

Locus ID: 10232

UniProt ID: [Q13421](#)

RefSeq Size: 2197

Cytogenetics: 16p13.3

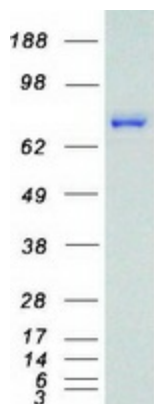
RefSeq ORF: 1863

Synonyms: MPF; SMRP

Summary: This gene encodes a preproprotein that is proteolytically processed to generate two protein products, megakaryocyte potentiating factor and mesothelin. Megakaryocyte potentiating factor functions as a cytokine that can stimulate colony formation of bone marrow megakaryocytes. Mesothelin is a glycosylphosphatidylinositol-anchored cell-surface protein that may function as a cell adhesion protein. This protein is overexpressed in epithelial mesotheliomas, ovarian cancers and in specific squamous cell carcinomas. Alternative splicing results in multiple transcript variants, at least one of which encodes an isoform that is proteolytically processed. [provided by RefSeq, Feb 2016]

Protein Families: Druggable Genome, Secreted Protein, Transmembrane

Product images:



Coomassie blue staining of purified MSLN protein (Cat# [TP302532]). The protein was produced from HEK293T cells transfected with MSLN cDNA clone (Cat# [RC202532]) using MegaTran 2.0 (Cat# [TT210002]).