

## Product datasheet for **TP302527L**

### **MESP1 (NM\_018670) Human Recombinant Protein**

#### **Product data:**

<b>Product Type:</b>	Recombinant Proteins
<b>Description:</b>	Recombinant protein of human mesoderm posterior 1 homolog (mouse) (MESP1), 1 mg
<b>Species:</b>	Human
<b>Expression Host:</b>	HEK293T
<b>Expression cDNA Clone or AA Sequence:</b>	Recombinant protein was produced with TrueORF clone, RC202527.
<b>Tag:</b>	C-Myc/DDK
<b>Predicted MW:</b>	28.3 kDa
<b>Concentration:</b>	>0.05 µg/µL as determined by microplate BCA method
<b>Purity:</b>	> 80% as determined by SDS-PAGE and Coomassie blue staining
<b>Buffer:</b>	25 mM Tris-HCl, 100 mM glycine, pH 7.3, 10% glycerol
<b>Preparation:</b>	Recombinant protein was captured through anti-DDK affinity column followed by conventional chromatography steps.
<b>Note:</b>	For testing in cell culture applications, please filter before use. Note that you may experience some loss of protein during the filtration process.
<b>Storage:</b>	Store at -80°C.
<b>Stability:</b>	Stable for 12 months from the date of receipt of the product under proper storage and handling conditions. Avoid repeated freeze-thaw cycles.
<b>RefSeq:</b>	<a href="#">NP_061140</a>
<b>Locus ID:</b>	55897
<b>UniProt ID:</b>	<a href="#">Q9BRJ9</a>
<b>RefSeq Size:</b>	1181
<b>Cytogenetics:</b>	15q26.1
<b>RefSeq ORF:</b>	804
<b>Synonyms:</b>	bHLHc5

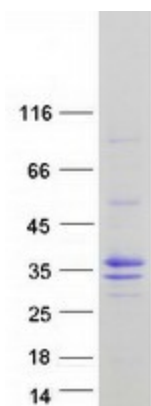


[View online »](#)

**Summary:** Transcription factor. Plays a role in the epithelialization of somitic mesoderm and in the development of cardiac mesoderm. Defines the rostrocaudal patterning of the somites by participating in distinct Notch pathways (By similarity).[UniProtKB/Swiss-Prot Function]

**Protein Families:** Druggable Genome, Transcription Factors

**Product images:**



Coomassie blue staining of purified MESP1 protein (Cat# [TP302527]). The protein was produced from HEK293T cells transfected with MESP1 cDNA clone (Cat# [RC202527]) using MegaTran 2.0 (Cat# [TT210002]).