

Product datasheet for **TP302524M**

PPPDE1 (DES12) (NM_016076) Human Recombinant Protein

Product data:

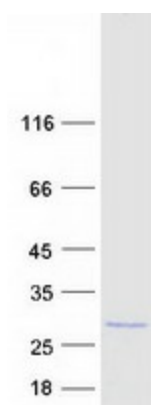
| | |
|---------------------------------------|---|
| Product Type: | Recombinant Proteins |
| Description: | Recombinant protein of human PPPDE peptidase domain containing 1 (PPPDE1), 100 µg |
| Species: | Human |
| Expression Host: | HEK293T |
| Expression cDNA Clone or AA Sequence: | >RC202524 protein sequence Red =Cloning site Green =Tags(s) |
| | <p>MGANQLVVLNVYDMYWMNEYTSSIGIGVFHSGIEVYGREFAYGGHPYPFSGIFEISPGNASELGETFKFK EAVVLGSTDPLEDDIEKIVEELGKEYKGNAYHLMHKNCNHFSSALSEILCGKEIPRWINRLAYFSSCIPF LQSCLPKEWLTPAALQSSVSQELQDELEEAEDAAASVASTAAGSRPGRHTKL</p> <p>TRTRPLEQKLISEEDLAANDILDYKDDDDKV</p> |
| Tag: | C-Myc/DDK |
| Predicted MW: | 21.3 kDa |
| Concentration: | >0.05 µg/µL as determined by microplate BCA method |
| Purity: | > 80% as determined by SDS-PAGE and Coomassie blue staining |
| Buffer: | 25 mM Tris-HCl, 100 mM glycine, pH 7.3, 10% glycerol |
| Preparation: | Recombinant protein was captured through anti-DDK affinity column followed by conventional chromatography steps. |
| Note: | For testing in cell culture applications, please filter before use. Note that you may experience some loss of protein during the filtration process. |
| Storage: | Store at -80°C. |
| Stability: | Stable for 12 months from the date of receipt of the product under proper storage and handling conditions. Avoid repeated freeze-thaw cycles. |
| RefSeq: | NP_057160 |
| Locus ID: | 51029 |
| UniProt ID: | Q9BSY9 , A0A024R5P6 |
| RefSeq Size: | 4109 |



[View online »](#)

| | |
|---------------|---|
| Cytogenetics: | 1q44 |
| RefSeq ORF: | 582 |
| Synonyms: | C1orf121; CGI-146; DESI; DeSI-2; DESI1; FAM152A; PNAS-4; PPPDE1 |
| Summary: | Has deubiquitinating activity towards 'Lys-48'- and 'Lys-63'-linked polyubiquitin chains. Deubiquitinates 'Lys-48'-linked polyubiquitination of RPS7 leading to its stabilization (PubMed:28483520).[UniProtKB/Swiss-Prot Function] |

Product images:



Coomassie blue staining of purified DESI2 protein (Cat# [TP302524]). The protein was produced from HEK293T cells transfected with DESI2 cDNA clone (Cat# [RC202524]) using MegaTran 2.0 (Cat# [TT210002]).