

Product datasheet for **TP302524L**

PPPDE1 (DES12) (NM_016076) Human Recombinant Protein

Product data:

Product Type: Recombinant Proteins

Description: Recombinant protein of human PPPDE peptidase domain containing 1 (PPPDE1), 1 mg

Species: Human

Expression Host: HEK293T

**Expression cDNA Clone
or AA Sequence:** >RC202524 protein sequence
Red=Cloning site **Green**=Tags(s)

MGANQLVVLNVYDMYWMNEYTSSIGIGVFHSGIEVYGREFAYGGHPYPFSGIFEISPGNASELGETFKFK
EAVVLGSTDFLIEDDIEKIVEELGKEYKGNAYHLMHKNCNHFSSALSEILCGKEIPRWINRLAYFSSCIPF
LQSCLPKEWLTPAALQSSVSQELQDELEEAEDAAASVASTAAGSRPGRHTKL

TRTRPLEQKLISEEDLAANDILDYKDDDDKV

Tag: C-Myc/DDK

Predicted MW: 21.3 kDa

Concentration: >0.05 µg/µL as determined by microplate BCA method

Purity: > 80% as determined by SDS-PAGE and Coomassie blue staining

Buffer: 25 mM Tris-HCl, 100 mM glycine, pH 7.3, 10% glycerol

Preparation: Recombinant protein was captured through anti-DDK affinity column followed by conventional chromatography steps.

Note: For testing in cell culture applications, please filter before use. Note that you may experience some loss of protein during the filtration process.

Storage: Store at -80°C.

Stability: Stable for 12 months from the date of receipt of the product under proper storage and handling conditions. Avoid repeated freeze-thaw cycles.

RefSeq: [NP_057160](#)

Locus ID: 51029

UniProt ID: [Q9BSY9](#), [A0A024R5P6](#)

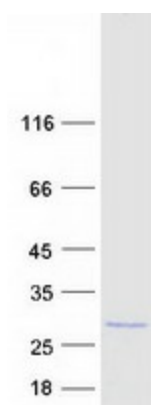
RefSeq Size: 4109



[View online »](#)

Cytogenetics:	1q44
RefSeq ORF:	582
Synonyms:	C1orf121; CGI-146; DESI; DeSI-2; DESI1; FAM152A; PNAS-4; PPPDE1
Summary:	Has deubiquitinating activity towards 'Lys-48'- and 'Lys-63'-linked polyubiquitin chains. Deubiquitinates 'Lys-48'-linked polyubiquitination of RPS7 leading to its stabilization (PubMed:28483520).[UniProtKB/Swiss-Prot Function]

Product images:



Coomassie blue staining of purified DESI2 protein (Cat# [TP302524]). The protein was produced from HEK293T cells transfected with DESI2 cDNA clone (Cat# [RC202524]) using MegaTran 2.0 (Cat# [TT210002]).