

Product datasheet for **TP302524**

PPPDE1 (DES12) (NM_016076) Human Recombinant Protein

Product data:

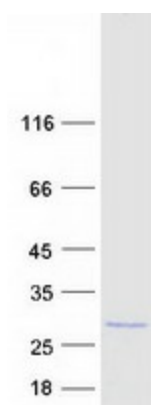
Product Type:	Recombinant Proteins
Description:	Recombinant protein of human PPPDE peptidase domain containing 1 (PPPDE1), 20 µg
Species:	Human
Expression Host:	HEK293T
Expression cDNA Clone or AA Sequence:	>RC202524 protein sequence Red =Cloning site Green =Tags(s)
	 MGANQLVVLNVYDMYWMNEYTSSIGIGVFHSGIEVYGREFAYGGHPYPFSGIFEISPGNASELGETFKFK EAVVLGSTDPLEDDIEKIVEELGKEYKGNAYHLMHKNCNHFSALSEILCGKEIPRWINRLAYFSSCIPF LQSCLPKEWLTPAALQSSVSQELQDELEEAEDAAASVASTAAGSRPGRHTKL TRTRPLEQKLISEEDLAANDILDYKDDDDKV
Tag:	C-Myc/DDK
Predicted MW:	21.3 kDa
Concentration:	>0.05 µg/µL as determined by microplate BCA method
Purity:	> 80% as determined by SDS-PAGE and Coomassie blue staining
Buffer:	25 mM Tris-HCl, 100 mM glycine, pH 7.3, 10% glycerol
Preparation:	Recombinant protein was captured through anti-DDK affinity column followed by conventional chromatography steps.
Note:	For testing in cell culture applications, please filter before use. Note that you may experience some loss of protein during the filtration process.
Storage:	Store at -80°C.
Stability:	Stable for 12 months from the date of receipt of the product under proper storage and handling conditions. Avoid repeated freeze-thaw cycles.
RefSeq:	<u>NP_057160</u>
Locus ID:	51029
UniProt ID:	<u>Q9BSY9</u>
RefSeq Size:	4109



[View online »](#)

Cytogenetics:	1q44
RefSeq ORF:	582
Synonyms:	C1orf121; CGI-146; DESI; DeSI-2; DESI1; FAM152A; PNAS-4; PPPDE1
Summary:	Has deubiquitinating activity towards 'Lys-48'- and 'Lys-63'-linked polyubiquitin chains. Deubiquitinates 'Lys-48'-linked polyubiquitination of RPS7 leading to its stabilization (PubMed:28483520).[UniProtKB/Swiss-Prot Function]

Product images:



Coomassie blue staining of purified DESI2 protein (Cat# TP302524). The protein was produced from HEK293T cells transfected with DESI2 cDNA clone (Cat# [RC202524]) using MegaTran 2.0 (Cat# [TT210002]).