

## Product datasheet for TP302516M

### UBE2H (NM\_003344) Human Recombinant Protein

#### Product data:

Product Type:	Recombinant Proteins
Description:	Recombinant protein of human ubiquitin-conjugating enzyme E2H (UBC8 homolog, yeast) (UBE2H), transcript variant 1, 100 µg
Species:	Human
Expression Host:	HEK293T
Expression cDNA Clone or AA Sequence:	>RC202516 protein sequence <b>Red</b> =Cloning site <b>Green</b> =Tags(s)
	MSSSPSPGKRRMDTDVVKLIESKHEVTILGGLNEFVVKFYGPQGTPYEGGWVKVRVDLPDKYPFKSPSIGF MNKIFHPNIDEASGTVCLDVINQWTALYDLTNIFESFLPQLLAYPNPIDPLNGDAAAAMYLHRPEEYKQK IKEYIQKYATEEALKEQEEGTGDSSSESSMSDFSEDEAQMEL
	<b>TRTRPLEQKLISEEDLAANDILDYKDDDDKV</b>
Tag:	C-Myc/DDK
Predicted MW:	20.5 kDa
Concentration:	>0.05 µg/µL as determined by microplate BCA method
Purity:	> 80% as determined by SDS-PAGE and Coomassie blue staining
Buffer:	25 mM Tris-HCl, 100 mM glycine, pH 7.3, 10% glycerol
Preparation:	Recombinant protein was captured through anti-DDK affinity column followed by conventional chromatography steps.
Note:	For testing in cell culture applications, please filter before use. Note that you may experience some loss of protein during the filtration process.
Storage:	Store at -80°C.
Stability:	Stable for 12 months from the date of receipt of the product under proper storage and handling conditions. Avoid repeated freeze-thaw cycles.
RefSeq:	<a href="#">NP_003335</a>
Locus ID:	7328
UniProt ID:	<a href="#">P62256</a> , <a href="#">A4D1L5</a>



[View online »](#)

RefSeq Size: 5174

Cytogenetics: 7q32.2

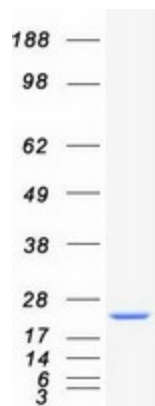
RefSeq ORF: 549

Synonyms: E2-20K; GID3; UBC8; UBCH; UBCH2

**Summary:** The modification of proteins with ubiquitin is an important cellular mechanism for targeting abnormal or short-lived proteins for degradation. Ubiquitination involves at least three classes of enzymes: ubiquitin-activating enzymes, or E1s, ubiquitin-conjugating enzymes, or E2s, and ubiquitin-protein ligases, or E3s. This gene encodes a member of the E2 ubiquitin-conjugating enzyme family. The encoded protein sequence is 100% identical to the mouse homolog and 98% identical to the frog and zebrafish homologs. Three alternatively spliced transcript variants have been found for this gene and they encode distinct isoforms. [provided by RefSeq, Feb 2011]

**Protein Pathways:** Ubiquitin mediated proteolysis

### Product images:



Coomassie blue staining of purified UBE2H protein (Cat# [TP302516]). The protein was produced from HEK293T cells transfected with UBE2H cDNA clone (Cat# [RC202516]) using MegaTran 2.0 (Cat# [TT210002]).