

Product datasheet for TP302513L

KEAP1 (NM_012289) Human Recombinant Protein

Product data:

| | |
|---------------------------------------|--|
| Product Type: | Recombinant Proteins |
| Description: | Recombinant protein of human kelch-like ECH-associated protein 1 (KEAP1), transcript variant 2, 1 mg |
| Species: | Human |
| Expression Host: | HEK293T |
| Expression cDNA Clone or AA Sequence: | >RC202513 protein sequence Red =Cloning site Green =Tags(s) |
| | <p>MQPDPRPSGAGACCRFLPLQSQCEGAGDAVMYASTECKAEVTPSQHGNRTFSYTLLEDHTKQAFGIMNEL RLSQQLCDVTLQVKYQDAPAAQFMAHKVVLASSSPVFKAMFTNGLREQGMEVVSIEGIHPKVMERLIEFA YTASISMGEKCVLHVMNGAVMYQIDSVVRACSDFLVQQLDPSNAIGIANFAEQIGCVLHQRAREIYMH FGEVAKQEEFFNLSHCQLVTLISRDDLNVRCSEV FHACINWVKYDCEQRRFYVQALLRAVRCHSLTPNF LQMQLQKCEILQSDSRCKDYLVKIFEELTLHKPTQVMPCRAPKVGRLIYTAGGYFRQSLSYLEAYNPSDG TWLRLADLQVPRSLAGCVVGGLLYAVGGRNNSPDGNTDSSALDCYNPMTNQWSPCAPMSVPRNRIGVGV IDGHIYAVGGSHGCIHHNSVERYEPERDEWHLVAPMLTRRIGVGVAVLNRLLYAVGGFDGTNRLNSAECY YPERNEWRMITAMNTIRSGAGVCVLHNCIYAAGGYDGDQLNSVERYDVETETWTFVAPMKHRRSALGIT VHQGRIYVLGGYDGHFTLDSVECYDPDPTDTWSEVTRMTSGRSGVGVAVTMEPCRKQIDQONCTC</p> <p>TRTRPLEQKLISEEDLAANDILDYKDDDDKV</p> |
| Tag: | C-Myc/DDK |
| Predicted MW: | 69.5 kDa |
| Concentration: | >0.05 µg/µL as determined by microplate BCA method |
| Purity: | > 80% as determined by SDS-PAGE and Coomassie blue staining |
| Buffer: | 25 mM Tris-HCl, 100 mM glycine, pH 7.3, 10% glycerol |
| Preparation: | Recombinant protein was captured through anti-DDK affinity column followed by conventional chromatography steps. |
| Note: | For testing in cell culture applications, please filter before use. Note that you may experience some loss of protein during the filtration process. |
| Storage: | Store at -80°C. |



[View online »](#)

Stability: Stable for 12 months from the date of receipt of the product under proper storage and handling conditions. Avoid repeated freeze-thaw cycles.

RefSeq: [NP_036421](#)

Locus ID: 9817

UniProt ID: [Q14145](#), [A0A024R7C0](#)

RefSeq Size: 2577

Cytogenetics: 19p13.2

RefSeq ORF: 1872

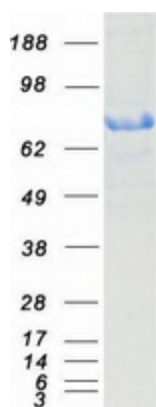
Synonyms: INrf2; KLHL19

Summary: This gene encodes a protein containing KELCH-1 like domains, as well as a BTB/POZ domain. Kelch-like ECH-associated protein 1 interacts with NF-E2-related factor 2 in a redox-sensitive manner and the dissociation of the proteins in the cytoplasm is followed by transportation of NF-E2-related factor 2 to the nucleus. This interaction results in the expression of the catalytic subunit of gamma-glutamylcysteine synthetase. Two alternatively spliced transcript variants encoding the same isoform have been found for this gene. [provided by RefSeq, Jul 2008]

Protein Families: Transcription Factors

Protein Pathways: Ubiquitin mediated proteolysis

Product images:



Coomassie blue staining of purified KEAP1 protein (Cat# [TP302513]). The protein was produced from HEK293T cells transfected with KEAP1 cDNA clone (Cat# [RC202513]) using MegaTran 2.0 (Cat# [TT210002]).