

Product datasheet for **TP302507M**

C5orf19 (REEP2) (NM_016606) Human Recombinant Protein

Product data:

Product Type:	Recombinant Proteins
Description:	Recombinant protein of human receptor accessory protein 2 (REEP2), 100 µg
Species:	Human
Expression Host:	HEK293T
Expression cDNA Clone or AA Sequence:	>RC202507 protein sequence Red =Cloning site Green =Tags(s)
	 MVSWIISRLVVLIFGTLYPAYSSYKAVKTKNVKEYVKWMMYWIVFAFFTTAETLTDIVLSWFPPYFELKI AFVIWLLSPYTKGSSVLYRKVHPTLSNKEKEIDEYITQARDKSYETMMRVGKRGLNLAANAAVTAAAKG VLSEKLRFSMQDLTLIRDEDALPLQRPDGRRLRSPGSLDITIEDLGDDPALSLRSSTNPADSRTEASED DMGDKAPKRAKPIKKAPKAEPLASKTLKTRPKKKTSGGGDSA TRTRPLEQKLISEEDLAANDILDYKDDDDKV
Tag:	C-Myc/DDK
Predicted MW:	28.1 kDa
Concentration:	>0.05 µg/µL as determined by microplate BCA method
Purity:	> 80% as determined by SDS-PAGE and Coomassie blue staining
Buffer:	25 mM Tris-HCl, 100 mM glycine, pH 7.3, 10% glycerol
Preparation:	Recombinant protein was captured through anti-DDK affinity column followed by conventional chromatography steps.
Note:	For testing in cell culture applications, please filter before use. Note that you may experience some loss of protein during the filtration process.
Storage:	Store at -80°C.
Stability:	Stable for 12 months from the date of receipt of the product under proper storage and handling conditions. Avoid repeated freeze-thaw cycles.
RefSeq:	NP_057690
Locus ID:	51308
UniProt ID:	Q9BRK0 , A8K3D2



[View online »](#)

RefSeq Size: 2203

Cytogenetics: 5q31.2

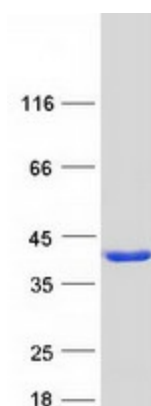
RefSeq ORF: 756

Synonyms: C5orf19; SGC32445; SPG72; Yip2d

Summary: This gene encodes a member of the receptor expression enhancing protein family. Studies of a related gene in mouse suggest that the encoded protein is found in the cell membrane and enhances the function of sweet taste receptors. Alternative splicing results in multiple transcript variants. [provided by RefSeq, Nov 2012]

Protein Families: Druggable Genome, Transmembrane

Product images:



Coomassie blue staining of purified REEP2 protein (Cat# [TP302507]). The protein was produced from HEK293T cells transfected with REEP2 cDNA clone (Cat# [RC202507]) using MegaTran 2.0 (Cat# [TT210002]).