

## Product datasheet for **TP302500L**

### ADFP (PLIN2) (NM\_001122) Human Recombinant Protein

#### Product data:

**Product Type:** Recombinant Proteins

**Description:** Recombinant protein of human adipose differentiation-related protein (ADFP), 1 mg

**Species:** Human

**Expression Host:** HEK293T

**Expression cDNA Clone or AA Sequence:** >RC202500 representing NM\_001122

**Red**=Cloning site **Green**=Tags(s)

MASVAVDPQPSWTRVNLPLVSSTYDLMSSAYLSTKDQYPYKSVCEMAENGVKTITSVAMTSALPIIQ  
KLEPQIAVANTYACKGLDRIEERLPILNQPSTQIVANAKGAVTGAKDAVTTTGTGAKDSVASTITGVMDK  
TKGAVTGSVEKTKSVVSGSINTVLGSRMMQLVSSGVENALTKSELLVEQYLPLTEEELEKEAKKVEGFDL  
VQKPSYYVRLGSLSTKLHSRAYQQALSRVKEAKQKSQQTISQLHSTVHLIEFARKNVYSANQKIQDAQDK  
LYLSWVEWKRSIGYDDTDESHCAEHIESRTLAIARNLTQQLQTTCHTLLSNIQGVPQNIQDQAKHMGVMA  
GDIYSVFRNAASFKEVSDSLTSSKGQLQKMKESLDDVMDYLVNNTPLNWLVGPFYPQLTESQNAQDQGA  
EMDKSSQETQRSEHKTH

**TRTRPLEQKLISEEDLAANDILDYKDDDDKV**

**Tag:** C-Myc/DDK

**Predicted MW:** 47.9 kDa

**Concentration:** >0.05 µg/µL as determined by microplate BCA method

**Purity:** > 80% as determined by SDS-PAGE and Coomassie blue staining

**Buffer:** 25 mM Tris-HCl, 100 mM glycine, pH 7.3, 10% glycerol

**Preparation:** Recombinant protein was captured through anti-DDK affinity column followed by conventional chromatography steps.

**Note:** For testing in cell culture applications, please filter before use. Note that you may experience some loss of protein during the filtration process.

**Storage:** Store at -80°C.

**Stability:** Stable for 12 months from the date of receipt of the product under proper storage and handling conditions. Avoid repeated freeze-thaw cycles.

**RefSeq:** [NP\\_001113](#)



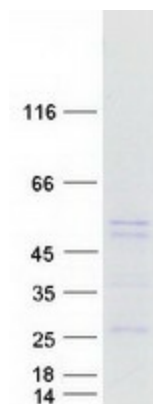
[View online »](#)

Locus ID: 123  
UniProt ID: [Q99541](#), [Q6FHZ7](#)  
RefSeq Size: 2010  
Cytogenetics: 9p22.1  
RefSeq ORF: 1311  
Synonyms: ADFP; ADRP

**Summary:** The protein encoded by this gene belongs to the perilipin family, members of which coat intracellular lipid storage droplets. This protein is associated with the lipid globule surface membrane material, and maybe involved in development and maintenance of adipose tissue. However, it is not restricted to adipocytes as previously thought, but is found in a wide range of cultured cell lines, including fibroblasts, endothelial and epithelial cells, and tissues, such as lactating mammary gland, adrenal cortex, Sertoli and Leydig cells, and hepatocytes in alcoholic liver cirrhosis, suggesting that it may serve as a marker of lipid accumulation in diverse cell types and diseases. Alternatively spliced transcript variants have been found for this gene. [provided by RefSeq, Mar 2011]

**Protein Families:** Druggable Genome

### Product images:



Coomassie blue staining of purified PLIN2 protein (Cat# [TP302500]). The protein was produced from HEK293T cells transfected with PLIN2 cDNA clone (Cat# [RC202500]) using MegaTran 2.0 (Cat# [TT210002]).