

Product datasheet for TP302500

ADFP (PLIN2) (NM_001122) Human Recombinant Protein

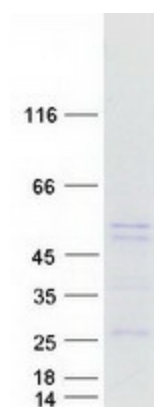
Product data:

Product Type:	Recombinant Proteins
Description:	Recombinant protein of human adipose differentiation-related protein (ADFP), 20 µg
Species:	Human
Expression Host:	HEK293T
Expression cDNA Clone or AA Sequence:	>RC202500 representing NM_001122 <div> <div>Red</div>=Cloning site <div>Green</div>=Tags(s) </div> <p> MASVAVDPQPSVTRVNLPLVSSTYDLMSSAYLSTKDQYPYLKSVCEMAENGVKTITSVAMTSALPIIQ KLEPQIAVANTYACKGLDRIERLPILNQPSTQIVANAKGAVTGAKDAVTTTGTGAKDSVASTITGVMDK TKGAVTGSVEKTKSVVSGSINTVLGSRMMQLVSSGVENALTKSELLVEQYLPLTEEELEKEAKKVEGFDL VQKPSYYVRLGSLSTKLHSRAYQQALSRVKEAKQKSQQTISQLHSTVHLIEFARKNVYSANQKIQDAQDK LYLSWVEWKRSIGYDDTDESHCAEHIESRTLAIARNLTQQLQTTCHTLLSNIQGVQPNIQDQAKHMGVM A GDIYSVFRNAASFKEVSDSLTSSKGQLQKMESLDDVMDYLVNNTPLNLVGPFPQLTESQNAQDQG A EMDKSSQETQRSEHKTH </p> <div> <div>TR</div>TRPLE <div>EQ</div>KLISEEDLA <div>AND</div>ILDYK <div>DDDD</div>DKV </div>
Tag:	C-Myc/DDK
Predicted MW:	47.9 kDa
Concentration:	>0.05 µg/µL as determined by microplate BCA method
Purity:	> 80% as determined by SDS-PAGE and Coomassie blue staining
Buffer:	25 mM Tris-HCl, 100 mM glycine, pH 7.3, 10% glycerol
Preparation:	Recombinant protein was captured through anti-DDK affinity column followed by conventional chromatography steps.
Note:	For testing in cell culture applications, please filter before use. Note that you may experience some loss of protein during the filtration process.
Storage:	Store at -80°C.


[View online »](#)

Stability:	Stable for 12 months from the date of receipt of the product under proper storage and handling conditions. Avoid repeated freeze-thaw cycles.
RefSeq:	NP_001113
Locus ID:	123
UniProt ID:	Q99541
RefSeq Size:	2010
Cytogenetics:	9p22.1
RefSeq ORF:	1311
Synonyms:	ADFP; ADRP
Summary:	The protein encoded by this gene belongs to the perilipin family, members of which coat intracellular lipid storage droplets. This protein is associated with the lipid globule surface membrane material, and maybe involved in development and maintenance of adipose tissue. However, it is not restricted to adipocytes as previously thought, but is found in a wide range of cultured cell lines, including fibroblasts, endothelial and epithelial cells, and tissues, such as lactating mammary gland, adrenal cortex, Sertoli and Leydig cells, and hepatocytes in alcoholic liver cirrhosis, suggesting that it may serve as a marker of lipid accumulation in diverse cell types and diseases. Alternatively spliced transcript variants have been found for this gene. [provided by RefSeq, Mar 2011]
Protein Families:	Druggable Genome

Product images:



Coomassie blue staining of purified PLIN2 protein (Cat# TP302500). The protein was produced from HEK293T cells transfected with PLIN2 cDNA clone (Cat# [RC202500]) using MegaTran 2.0 (Cat# [TT210002]).