

## Product datasheet for **TP302495**

### PPP3CC (NM\_005605) Human Recombinant Protein

#### Product data:

Product Type:	Recombinant Proteins
Description:	Recombinant protein of human protein phosphatase 3 (formerly 2B), catalytic subunit, gamma isoform (PPP3CC), 20 µg
Species:	Human
Expression Host:	HEK293T
Expression cDNA Clone or AA Sequence:	>RC202495 protein sequence <b>Red</b> =Cloning site <b>Green</b> =Tags(s)

MSGRRFHLSTTDRVIKAVFPPTQRLTFKEVFENGKPKVDVLKNHLVKEGRLEEEVALKIIINDGAAILRQ  
EKTMI EVDAPITVCGDIHGQFFDLMKLFEVGGSPSNTRYLFLGDYVDRGYFSIECVLYLWSLKINHPKTL  
FLLRGNHECRHLTDYFTFKQECRIKYSEQVYDACMETFDCLPLAALLNQQLCVHGGMSPEITSLDDIRK  
LDRFTEPPAFGPVCDLLWSDPSEDYGNEKTL EHYTHNTVRGCSYFYSYPAVCEFLQNNNLLSIIRAHEAQ  
DAGYRMYRKSQATGFPSLITIFSAPNYLDVYNNKA AVLKYENNV MNIRQFNCSHPHYWLPNFM DVFTWSL  
PFVGEKVTEMLVNLNICSDDDELISDDEAEGSTTVRKEIIRNKIRAIGKMARVFSILRQESESVLTLKGL  
TPTGTLPLGLVLSGGKQT IETATVEAVEAREAIRGFS LQHKIRSFEEARGLDRINERMPPRKDSIHAGGPM  
KSVTSAHSHAAHRSDQGKKAHS

**TRTRPLEQKLISEEDLAANDILDYKDDDDKV**

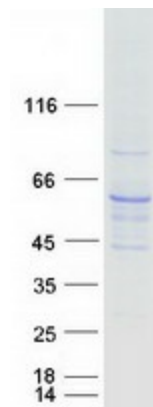
Tag:	C-Myc/DDK
Predicted MW:	57.9 kDa
Concentration:	>0.05 µg/µL as determined by microplate BCA method
Purity:	> 80% as determined by SDS-PAGE and Coomassie blue staining
Buffer:	25 mM Tris-HCl, 100 mM glycine, pH 7.3, 10% glycerol
Preparation:	Recombinant protein was captured through anti-DDK affinity column followed by conventional chromatography steps.
Note:	For testing in cell culture applications, please filter before use. Note that you may experience some loss of protein during the filtration process.
Storage:	Store at -80°C.



[View online »](#)

<b>Stability:</b>	Stable for 12 months from the date of receipt of the product under proper storage and handling conditions. Avoid repeated freeze-thaw cycles.
<b>RefSeq:</b>	<a href="#">NP_005596</a>
<b>Locus ID:</b>	5533
<b>UniProt ID:</b>	<a href="#">P48454</a>
<b>RefSeq Size:</b>	2334
<b>Cytogenetics:</b>	8p21.3
<b>RefSeq ORF:</b>	1536
<b>Synonyms:</b>	CALNA3; CNA3; PP2Bgamma
<b>Summary:</b>	Calcineurin is a calcium-dependent, calmodulin-stimulated protein phosphatase involved in the downstream regulation of dopaminergic signal transduction. Calcineurin is composed of a regulatory subunit and a catalytic subunit. The protein encoded by this gene represents one of the regulatory subunits that has been found for calcineurin. Three transcript variants encoding different isoforms have been found for this gene. [provided by RefSeq, Sep 2011]
<b>Protein Families:</b>	Druggable Genome, Phosphatase
<b>Protein Pathways:</b>	Alzheimer's disease, Amyotrophic lateral sclerosis (ALS), Apoptosis, Axon guidance, B cell receptor signaling pathway, Calcium signaling pathway, Long-term potentiation, MAPK signaling pathway, Natural killer cell mediated cytotoxicity, Oocyte meiosis, T cell receptor signaling pathway, VEGF signaling pathway, Wnt signaling pathway

### Product images:



Coomassie blue staining of purified PPP3CC protein (Cat# TP302495). The protein was produced from HEK293T cells transfected with PPP3CC cDNA clone (Cat# [RC202495]) using MegaTran 2.0 (Cat# [TT210002]).