

## Product datasheet for **TP302484M**

### **C16orf70 (NM\_025187) Human Recombinant Protein**

#### **Product data:**

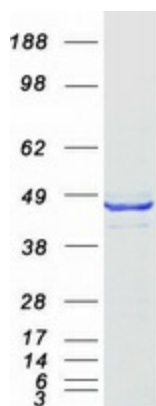
<b>Product Type:</b>	Recombinant Proteins
<b>Description:</b>	Recombinant protein of human chromosome 16 open reading frame 70 (C16orf70), 100 µg
<b>Species:</b>	Human
<b>Expression Host:</b>	HEK293T
<b>Expression cDNA Clone or AA Sequence:</b>	>RC202484 protein sequence <b>Red</b> =Cloning site <b>Green</b> =Tags(s)
	<p>MLDLEWVPERSLGNEQWEFTLGMP LAQAVAILQKHCRIKNVQVLYSEQSPLSHDLILNLTQDGIKLMFD  AFNQRLKVIEVCDLT KVKLKYCGVHFNSQAIAPTIEQIDQSFGATHPGVYN SAEQLFHLNFRGLSFSFQL  DSWTEAPKYEPNFAHGLASLQIPHGATVKRMYISGNSLQDTKAPMMPLSCFLGNVYAESVDVLRDGTG  P  AGLRLRLLAAGCGPGLLADAKMRV FERSVYFGDSCQDVL SMLGSPHKVFYKSEDKMKIHSPSPHKQVPSK  CNDYFFNYFTLGVDILFDANTHKVKKFVLHTNYPGHYNFN IYHRCEFKIPLAIKKENADGQTETCTTYSK  WDNIQELLGHPVEKPVVLHRSSSPNNTNPFGSTFCFGLQRMIFEVMQNNHIASVTLYGPPRPGSHLRTAE  LP</p> <p><b>TRTRPLEQKLISEEDLAANDILDYKDDDDKV</b></p>
<b>Tag:</b>	C-Myc/DDK
<b>Predicted MW:</b>	47.3 kDa
<b>Concentration:</b>	>0.05 µg/µL as determined by microplate BCA method
<b>Purity:</b>	> 80% as determined by SDS-PAGE and Coomassie blue staining
<b>Buffer:</b>	25 mM Tris-HCl, 100 mM glycine, pH 7.3, 10% glycerol
<b>Preparation:</b>	Recombinant protein was captured through anti-DDK affinity column followed by conventional chromatography steps.
<b>Note:</b>	For testing in cell culture applications, please filter before use. Note that you may experience some loss of protein during the filtration process.
<b>Storage:</b>	Store at -80°C.
<b>Stability:</b>	Stable for 12 months from the date of receipt of the product under proper storage and handling conditions. Avoid repeated freeze-thaw cycles.



[View online »](#)

RefSeq:	<u>NP_079463</u>
Locus ID:	80262
UniProt ID:	<u>Q9BSU1</u>
RefSeq Size:	2943
Cytogenetics:	16q22.1
RefSeq ORF:	1266
Synonyms:	C16orf6; lin-10; LIN10
Summary:	Plays a regulatory role in autophagic activity. In complex with BCAS3, associates with the autophagosome formation site during both non-selective and selective autophagy. [UniProtKB/Swiss-Prot Function]

### Product images:



Coomassie blue staining of purified C16orf70 protein (Cat# [TP302484]). The protein was produced from HEK293T cells transfected with C16orf70 cDNA clone (Cat# [RC202484]) using MegaTran 2.0 (Cat# [TT210002]).