

Product datasheet for TP302474M

TLE2 (NM_003260) Human Recombinant Protein

Product data:

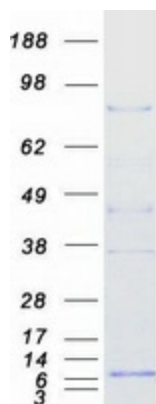
Product Type:	Recombinant Proteins
Description:	Recombinant protein of human transducin-like enhancer of split 2 (E(sp1) homolog, Drosophila) (TLE2), transcript variant 1, 100 µg
Species:	Human
Expression Host:	HEK293T
Expression cDNA Clone or AA Sequence:	>RC202474 protein sequence Red =Cloning site Green =Tags(s)
	<p>MYPQGRHPTPLQSGQPFKFSILEICDRIKEEFQFLQAQYHSLKLECEKLASEKTEMQRHYVMYYEMSYGL NIEMHKQAEIVKRLSGICAQIIPFLTQEHQQQVLQAVERAKQVTVGELNSLIGQQQLPLSHHAPPVPLTP RPAGLVGGSATGLLALSGALAAQAQLAAVKEDRAGVEAEGSRVERAPSRASPSPPESLVEEERPSGPG GGGKQRADEKEPSGPYESDEDEKSDYNLVDEDEDQPSEPPSPATTPCGKVPICIPARRDLVDSPASLASSLG SPLPRAKELILNDLPASTPASKSCDSSPPQDASTPGPSSASHLCQLAAKPAPSTDSVALRSPLTLSSPFT TSFSLGSHSTLNGDLSVPSSYVSLHLSQVSSSVVYGRSPVMAFESHPLRGSSVSSSLPSIPGGKPAYS FHVSADGQMMPVFPSPDALVGAGIPRHARQLHTLAHGEVVCVAVTISGSTQHVTGGKGCVKVWDVGVQPGA KTPVAQLDCLNRDNYIRSKLLPDGRSLIVGGEASTLSIWDLAAPTPIKAELTSSAPACYALAVSPDAK VCFSCSDGNIVWDLQNQTMVRQFQGHTDGASCIDISDYGTRLWTGGLDNTVRCWDLREGRQLQHQHDFS SQIFSLGHCPNQDWLAVGMESSNVEILHVRKPEKYQLHLHESCVLSLKFASCGRWFVSTGKDNLLNAWRT PYGASIFQSKESSSVLSCDISRNKYIVTGS GDKKATVYEVVY</p> <p>TRTRPLEQKLISEEDLAANDILDYKDDDDKV</p>
Tag:	C-Myc/DDK
Predicted MW:	79.7 kDa
Concentration:	>0.05 µg/µL as determined by microplate BCA method
Purity:	> 80% as determined by SDS-PAGE and Coomassie blue staining
Buffer:	25 mM Tris-HCl, 100 mM glycine, pH 7.3, 10% glycerol
Preparation:	Recombinant protein was captured through anti-DDK affinity column followed by conventional chromatography steps.
Note:	For testing in cell culture applications, please filter before use. Note that you may experience some loss of protein during the filtration process.



View online »

Storage:	Store at -80°C.
Stability:	Stable for 12 months from the date of receipt of the product under proper storage and handling conditions. Avoid repeated freeze-thaw cycles.
RefSeq:	NP_003251
Locus ID:	7089
UniProt ID:	Q04725
RefSeq Size:	2722
Cytogenetics:	19p13.3
RefSeq ORF:	2229
Synonyms:	ESG; ESG2; GRG2
Summary:	Transcriptional corepressor that binds to a number of transcription factors. Inhibits the transcriptional activation mediated by CTNNB1 and TCF family members in Wnt signaling. The effects of full-length TLE family members may be modulated by association with dominant-negative AES (By similarity).[UniProtKB/Swiss-Prot Function]
Protein Families:	Transcription Factors

Product images:



Coomassie blue staining of purified TLE2 protein (Cat# [TP302474]). The protein was produced from HEK293T cells transfected with TLE2 cDNA clone (Cat# [RC202474]) using MegaTran 2.0 (Cat# [TT210002]).