

## Product datasheet for TP302474L

### TLE2 (NM\_003260) Human Recombinant Protein

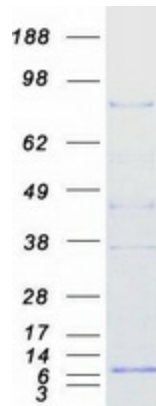
#### Product data:

Product Type:	Recombinant Proteins
Description:	Recombinant protein of human transducin-like enhancer of split 2 (E(sp1) homolog, Drosophila) (TLE2), transcript variant 1, 1 mg
Species:	Human
Expression Host:	HEK293T
Expression cDNA Clone or AA Sequence:	>RC202474 protein sequence <b>Red</b> =Cloning site <b>Green</b> =Tags(s)
	<p>MYPQGRHPTPLQSGQPFKFSILEICDRIKEEFQFLQAQYHSLKLECEKLASEKTEMQRHYVMYYEMSYGL NIEMHKQAEIVKRLSGICAQIIPFLTQEHQQQVLQAVERAKQVTVGELNSLIGQQQLPLSHHAPPVPLTP RPAGLVGGSATGLLALSGALAAQAQLAAVKEDRAGVEAEGSRVERAPSRASPSPPESLVEEERPSGPG GGGKQRADEKEPSGPYESDEDEKSDYNLWDEDQPSEPPSPATTPCGKVPICIPARRDLVDSPASLASSLG SPLPRAKELILNDLPASTPASKSCDSSPPQDASTPGPSSASHLCQLAAKPAPSTDSVALRSPLTLSSPFT TSFSLGSHSTLNGDLSVPSSYVSLHLSQVSSSVYGRSPVMAFESHPLRGSSVSSSLPSIPGGKPAYS FHVSADGQMMPVFPSPDALVGAGIPRHARQLHTLAHGEVVCVAVTISGSTQHVVYTGKGCVKVWDVGVQPGA KTPVAQLDCLNRDNYIRSKLLPDGRSLIVGGEASTLSIWDLAAPTPIKAELTSSAPACYALAVSPDAK VCFSCSDGNIVWDLQNQTMVRQFQGHDTGASCIDISDYGTRLWTGGLDNTVRCWDLREGRQLQHQHDFS SQIFSLGHCPNQDWLAVGMESSNVEILHVRKPEKYQLHLHESCVLSLKFASCGRWFVSTGKDNLLNAWRT PYGASIFQSKESSSVLSCDISRNKYIVTGS GDKKATVYEVVY</p> <p><b>TRTRPLEQKLISEEDLAANDILDYKDDDDKV</b></p>
Tag:	C-Myc/DDK
Predicted MW:	79.7 kDa
Concentration:	>0.05 µg/µL as determined by microplate BCA method
Purity:	> 80% as determined by SDS-PAGE and Coomassie blue staining
Buffer:	25 mM Tris-HCl, 100 mM glycine, pH 7.3, 10% glycerol
Preparation:	Recombinant protein was captured through anti-DDK affinity column followed by conventional chromatography steps.
Note:	For testing in cell culture applications, please filter before use. Note that you may experience some loss of protein during the filtration process.



[View online »](#)

<b>Storage:</b>	Store at -80°C.
<b>Stability:</b>	Stable for 12 months from the date of receipt of the product under proper storage and handling conditions. Avoid repeated freeze-thaw cycles.
<b>RefSeq:</b>	<a href="#">NP_003251</a>
<b>Locus ID:</b>	7089
<b>UniProt ID:</b>	<a href="#">Q04725</a>
<b>RefSeq Size:</b>	2722
<b>Cytogenetics:</b>	19p13.3
<b>RefSeq ORF:</b>	2229
<b>Synonyms:</b>	ESG; ESG2; GRG2
<b>Summary:</b>	Transcriptional corepressor that binds to a number of transcription factors. Inhibits the transcriptional activation mediated by CTNNB1 and TCF family members in Wnt signaling. The effects of full-length TLE family members may be modulated by association with dominant-negative AES (By similarity).[UniProtKB/Swiss-Prot Function]
<b>Protein Families:</b>	Transcription Factors

**Product images:**

Coomassie blue staining of purified TLE2 protein (Cat# [TP302474]). The protein was produced from HEK293T cells transfected with TLE2 cDNA clone (Cat# [RC202474]) using MegaTran 2.0 (Cat# [TT210002]).