

## Product datasheet for **TP302473M**

### UBE2D4 (NM\_015983) Human Recombinant Protein

#### Product data:

Product Type:	Recombinant Proteins
Description:	Recombinant protein of human ubiquitin-conjugating enzyme E2D 4 (putative) (UBE2D4), 100 µg
Species:	Human
Expression Host:	HEK293T
Expression cDNA Clone or AA Sequence:	>RC202473 representing NM_015983 <b>Red</b> =Cloning site <b>Green</b> =Tags(s)  MAVKRIQKELTDLQRDPPAQCSAGPVGDDLFWQATIMGPNDSFYQGGVFFLTIHFPTDYPFKPPKVAFT TKIYHPNINSNGSICLDILRSQWSPALTVSKVLLSICSLLCDPNPDDPLVPEIAHTYKADREKYNRLARE WTQKYAM  <b>TRTRPLEQKLISEEDLAANDILDYKDDDDKV</b>
Tag:	C-Myc/DDK
Predicted MW:	16.5 kDa
Concentration:	>0.05 µg/µL as determined by microplate BCA method
Purity:	> 80% as determined by SDS-PAGE and Coomassie blue staining
Buffer:	25 mM Tris-HCl, 100 mM glycine, pH 7.3, 10% glycerol
Preparation:	Recombinant protein was captured through anti-DDK affinity column followed by conventional chromatography steps.
Note:	For testing in cell culture applications, please filter before use. Note that you may experience some loss of protein during the filtration process.
Storage:	Store at -80°C.
Stability:	Stable for 12 months from the date of receipt of the product under proper storage and handling conditions. Avoid repeated freeze-thaw cycles.
RefSeq:	<a href="#">NP_057067</a>
Locus ID:	51619
UniProt ID:	<a href="#">Q9Y2X8</a> , <a href="#">A0A024RA90</a>



[View online »](#)

RefSeq Size: 1398

Cytogenetics: 7p13

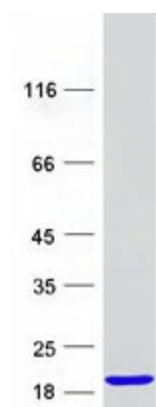
RefSeq ORF: 441

Synonyms: HBUCE1

**Summary:** Accepts ubiquitin from the E1 complex and catalyzes its covalent attachment to other proteins. In vitro able to promote polyubiquitination using all 7 ubiquitin Lys residues, but may prefer 'Lys-11' and 'Lys-48'-linked polyubiquitination.[UniProtKB/Swiss-Prot Function]

**Protein Pathways:** Ubiquitin mediated proteolysis

### Product images:



Coomassie blue staining of purified UBE2D4 protein (Cat# [TP302473]). The protein was produced from HEK293T cells transfected with UBE2D4 cDNA clone (Cat# [RC202473]) using MegaTran 2.0 (Cat# [TT210002]).