

Product datasheet for **TP302473**

UBE2D4 (NM_015983) Human Recombinant Protein

Product data:

| | |
|---------------------------------------|---|
| Product Type: | Recombinant Proteins |
| Description: | Recombinant protein of human ubiquitin-conjugating enzyme E2D 4 (putative) (UBE2D4), 20 µg |
| Species: | Human |
| Expression Host: | HEK293T |
| Expression cDNA Clone or AA Sequence: | >RC202473 representing NM_015983 Red =Cloning site Green =Tags(s) |
| | MAVKRIQKELTDLQRDPPAQCSAGPVGDDLFWQATIMGPNDSFYQGGVFFLTIHFPTDYPFKPPKVAFT TKIYHPNINSNGSICLDILRSQWSPALTVSKVLLSICLLCDPNPDDPLVPEIAHTYKADREKYNRLARE WTQKYAM |
| | TRTRPLEQKLISEEDLAANDILDYKDDDDKV |
| Tag: | C-Myc/DDK |
| Predicted MW: | 16.5 kDa |
| Concentration: | >0.05 µg/µL as determined by microplate BCA method |
| Purity: | > 80% as determined by SDS-PAGE and Coomassie blue staining |
| Buffer: | 25 mM Tris-HCl, 100 mM glycine, pH 7.3, 10% glycerol |
| Preparation: | Recombinant protein was captured through anti-DDK affinity column followed by conventional chromatography steps. |
| Note: | For testing in cell culture applications, please filter before use. Note that you may experience some loss of protein during the filtration process. |
| Storage: | Store at -80°C. |
| Stability: | Stable for 12 months from the date of receipt of the product under proper storage and handling conditions. Avoid repeated freeze-thaw cycles. |
| RefSeq: | NP_057067 |
| Locus ID: | 51619 |
| UniProt ID: | Q9Y2X8 , A0A024RA90 |



[View online »](#)

RefSeq Size: 1398

Cytogenetics: 7p13

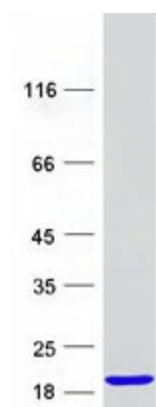
RefSeq ORF: 441

Synonyms: HBUCE1

Summary: Accepts ubiquitin from the E1 complex and catalyzes its covalent attachment to other proteins. In vitro able to promote polyubiquitination using all 7 ubiquitin Lys residues, but may prefer 'Lys-11' and 'Lys-48'-linked polyubiquitination.[UniProtKB/Swiss-Prot Function]

Protein Pathways: Ubiquitin mediated proteolysis

Product images:



Coomassie blue staining of purified UBE2D4 protein (Cat# TP302473). The protein was produced from HEK293T cells transfected with UBE2D4 cDNA clone (Cat# [RC202473]) using MegaTran 2.0 (Cat# [TT210002]).