

Product datasheet for TP302464L

GRK6 (NM_001004106) Human Recombinant Protein

Product data:

Product Type:	Recombinant Proteins
Description:	Recombinant protein of human G protein-coupled receptor kinase 6 (GRK6), transcript variant 1, 1 mg
Species:	Human
Expression Host:	HEK293T
Expression cDNA Clone or AA Sequence:	>RC202464 representing NM_001004106 Red=Cloning site Green=Tags(s)

MELENIVANTVLLKAREGGGGNRKKGSKKWRQMLQFPHISQCEELRLSLERDYHSLCERQPIGRLLFREF
CATRPELSRCVAFLDGVAEYVTPDDKRKACGRQLTQNFSLHTGPDLIPEVPRQLVTNCTQRLEQGPCKD
LFQELTRLTHEYLSVAPFADYLDISIYFNRFLQWKWLERQPVTKNTFRQYRVLGKGGFGEVCACQVRATGK
MYACKKLEKKRIKKRKGAMALNEKQILEKVNRFVSLAYAYETKDALCLVLTLMNGGDLKFHIYHMGQ
AGFPEARAVFYAAEICCGLEDLHRERIVYRDLKPENILLDDHGHIRISDLGLAVHVPEGQTIKGRVGTVG
YMAPEVVKNERYTFSPDWWALGCLLYEMIAGQSPFQQRKKIKREEVERLVKEVPEEYSERFSPQARSLC
SQLLCKDPAERLGCRRGGSAREVKEHPLFKKLNFKRLGAGMLEPPFKPDPQAIYCKDVLIDIEQFSTVKGVE
LEPTDQDFYQKFATGSVIPWQNEMVETECFQELNVFGLDGSVPPDLWDWKQPPAPPKKGLLQRLFSRQD
CCGNCSDSSEELPTRL

TRTRPLEQKLISEEDLAANDILDYKDDDDKV

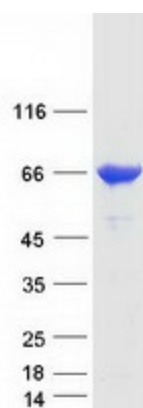
Tag:	C-Myc/DDK
Predicted MW:	65.8 kDa
Concentration:	>0.05 µg/µL as determined by microplate BCA method
Purity:	> 80% as determined by SDS-PAGE and Coomassie blue staining
Buffer:	25 mM Tris-HCl, 100 mM glycine, pH 7.3, 10% glycerol
Preparation:	Recombinant protein was captured through anti-DDK affinity column followed by conventional chromatography steps.
Note:	For testing in cell culture applications, please filter before use. Note that you may experience some loss of protein during the filtration process.
Storage:	Store at -80°C.



[View online »](#)

Stability:	Stable for 12 months from the date of receipt of the product under proper storage and handling conditions. Avoid repeated freeze-thaw cycles.
RefSeq:	NP_001004106
Locus ID:	2870
UniProt ID:	P43250
RefSeq Size:	2930
Cytogenetics:	5q35.3
RefSeq ORF:	1728
Synonyms:	GPRK6
Summary:	This gene encodes a member of the guanine nucleotide-binding protein (G protein)-coupled receptor kinase subfamily of the Ser/Thr protein kinase family. The protein phosphorylates the activated forms of G protein-coupled receptors thus initiating their deactivation. Several transcript variants encoding different isoforms have been described for this gene. [provided by RefSeq, Jul 2008]
Protein Families:	Druggable Genome, Protein Kinase
Protein Pathways:	Chemokine signaling pathway, Endocytosis

Product images:



Coomassie blue staining of purified GRK6 protein (Cat# [TP302464]). The protein was produced from HEK293T cells transfected with GRK6 cDNA clone (Cat# [RC202464]) using MegaTran 2.0 (Cat# [TT210002]).