

## Product datasheet for **TP302460M**

### **MMP1 (NM\_002421) Human Recombinant Protein**

#### **Product data:**

<b>Product Type:</b>	Recombinant Proteins
<b>Description:</b>	Recombinant protein of human matrix metalloproteinase 1 (interstitial collagenase) (MMP1), transcript variant 1, 100 µg
<b>Species:</b>	Human
<b>Expression Host:</b>	HEK293T
<b>Expression cDNA Clone or AA Sequence:</b>	>RC202460 protein sequence <b>Red</b> =Cloning site <b>Green</b> =Tags(s)

MHSFPPLLLLLFWGVVSHSFPATLETQEQDVLVQKYLEKYNNLKNDRQVEKRRNSGPVWEKCLKQMQEF  
FGLKVTGKPAETLKVMKQPRCGVPDVAQFVLTEGNPRWEQTHLTYRIENYTPDLPRADVDAIEKAFQL  
WSNVTPLTFTKVSEGQADIMISFVRGDHRDNSPFDGPGGNLAHAFQPGPGIGGDAHFDEDERWTNNFREY  
NLHRVAAHELGHSLGLSHSTDIGALMYPSTYFSGDVQLAQDDIDGIQAIYGRSQNPVQPIGPQTPKACDS  
KLTFDAITIRGEVMFFKDRFYMRTNPFYPEVELNFISVFWPQLPNGLEAAYEFADRDEVRFKGNKYWA  
VQGQNVLHGYPKDIYSSFGFPRTVKHIDAALSEENTGKTYFFVANKYWRYDEYKRSMDPGYPKMIHDFP  
GIGHKVDVAFMKDGGFFYFFHGTRQYKFDPKTKRILTQKANSWFNCRKN

**TRTRPLEQKLISEEDLAANDILDYKDDDDKV**

<b>Tag:</b>	C-Myc/DDK
<b>Predicted MW:</b>	51.8 kDa
<b>Concentration:</b>	>0.05 µg/µL as determined by microplate BCA method
<b>Purity:</b>	> 80% as determined by SDS-PAGE and Coomassie blue staining
<b>Buffer:</b>	25 mM Tris-HCl, 100 mM glycine, pH 7.3, 10% glycerol
<b>Preparation:</b>	Recombinant protein was captured through anti-DDK affinity column followed by conventional chromatography steps.
<b>Note:</b>	For testing in cell culture applications, please filter before use. Note that you may experience some loss of protein during the filtration process.
<b>Storage:</b>	Store at -80°C.
<b>Stability:</b>	Stable for 12 months from the date of receipt of the product under proper storage and handling conditions. Avoid repeated freeze-thaw cycles.



[View online »](#)

RefSeq: [NP\\_002412](#)

Locus ID: 4312

UniProt ID: [P03956](#), [Q53G95](#)

RefSeq Size: 2081

Cytogenetics: 11q22.2

RefSeq ORF: 1407

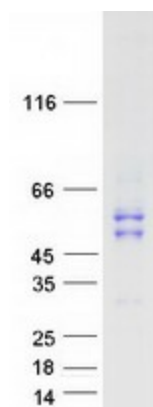
Synonyms: CLG; CLGN

**Summary:** This gene encodes a member of the peptidase M10 family of matrix metalloproteinases (MMPs). Proteins in this family are involved in the breakdown of extracellular matrix in normal physiological processes, such as embryonic development, reproduction, and tissue remodeling, as well as in disease processes, such as arthritis and metastasis. The encoded preproprotein is proteolytically processed to generate the mature protease. This secreted protease breaks down the interstitial collagens, including types I, II, and III. The gene is part of a cluster of MMP genes on chromosome 11. Mutations in this gene are associated with chronic obstructive pulmonary disease (COPD). Alternative splicing results in multiple transcript variants, at least one of which encodes an isoform that is proteolytically processed. [provided by RefSeq, Jan 2016]

**Protein Families:** Druggable Genome, Protease, Secreted Protein

**Protein Pathways:** Bladder cancer, Pathways in cancer, PPAR signaling pathway

### Product images:



Coomassie blue staining of purified MMP1 protein (Cat# [TP302460]). The protein was produced from HEK293T cells transfected with MMP1 cDNA clone (Cat# [RC202460]) using MegaTran 2.0 (Cat# [TT210002]).