

## Product datasheet for **TP302452**

### GM2A (NM\_000405) Human Recombinant Protein

#### Product data:

**Product Type:** Recombinant Proteins

**Description:** Recombinant protein of human GM2 ganglioside activator (GM2A), 20 µg

**Species:** Human

**Expression Host:** HEK293T

**Expression cDNA Clone  
or AA Sequence:** >RC202452 protein sequence  
**Red**=Cloning site **Green**=Tags(s)

MQSLMQAPLLIALGLLLAAPAQAHLKPKSQLSSFSWDNCDEGKDPVIRSLTLEPDPVIVPGNVTLISVVG  
STSVPLSSPLKVDLVLEKEVAGLWIKIPCTDYIGSCTFEHFCDVLDMLIPTGEPCEPLRTYGLPCHCPF  
KEGTYSLPKSEFVVPDLELPSWLTTGNYRIESVLSSSGKRLGCIKIAASLKI

**TRTRPLEQKLISEEDLAANDILDYKDDDDKV**

**Tag:** C-Myc/DDK

**Predicted MW:** 20.7 kDa

**Concentration:** >0.05 µg/µL as determined by microplate BCA method

**Purity:** > 80% as determined by SDS-PAGE and Coomassie blue staining

**Buffer:** 25 mM Tris-HCl, 100 mM glycine, pH 7.3, 10% glycerol

**Preparation:** Recombinant protein was captured through anti-DDK affinity column followed by conventional chromatography steps.

**Note:** For testing in cell culture applications, please filter before use. Note that you may experience some loss of protein during the filtration process.

**Storage:** Store at -80°C.

**Stability:** Stable for 12 months from the date of receipt of the product under proper storage and handling conditions. Avoid repeated freeze-thaw cycles.

**RefSeq:** [NP\\_000396](#)

**Locus ID:** 2760

**UniProt ID:** [P17900](#)

**RefSeq Size:** 3690



[View online »](#)

Cytogenetics: 5q33.1

RefSeq ORF: 579

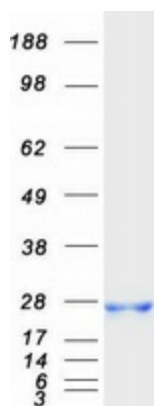
Synonyms: GM2-AP; SAP-3

**Summary:** This gene encodes a small glycolipid transport protein which acts as a substrate specific co-factor for the lysosomal enzyme beta-hexosaminidase A. Beta-hexosaminidase A, together with GM2 ganglioside activator, catalyzes the degradation of the ganglioside GM2, and other molecules containing terminal N-acetyl hexosamines. Mutations in this gene result in GM2-gangliosidosis type AB or the AB variant of Tay-Sachs disease. Alternative splicing results in multiple transcript variants. [provided by RefSeq, Nov 2009]

**Protein Families:** Druggable Genome

**Protein Pathways:** Lysosome

### Product images:



Coomassie blue staining of purified GM2A protein (Cat# TP302452). The protein was produced from HEK293T cells transfected with GM2A cDNA clone (Cat# [RC202452]) using MegaTran 2.0 (Cat# [TT210002]).