

Product datasheet for **TP302441L**

CAMKV (NM_024046) Human Recombinant Protein

Product data:

Product Type:	Recombinant Proteins
Description:	Recombinant protein of human CaM kinase-like vesicle-associated (CAMKV), 1 mg
Species:	Human
Expression Host:	HEK293T
Expression cDNA Clone or AA Sequence:	>RC202441 protein sequence Red =Cloning site Green =Tags(s)

MPFGCVTLGDKKNYNQPSEVTDRLGQVIKTEEFCEIFRAKDKTTGKLHTCKKFQKRDGRKVRKAAKNE
IGILKMKHPNILQLVDVVFTRKEYFIFLELATGREVFDWILDQGYYSERDTSNVVRQVLEAVAYLHSLK
IVHRNLKLENLVYYNRLKNSKIVISDFHLAKLENGLIKEPCGTPEYLAPVGRQRYGRPVDCWAIGVIM
YILLSGNPPFYEEVEEDDYENHDKNLFKILAGDYEFDSPYWDDISQAAKDLVTRLMEVEQDQRITAEAA
ISHEWISGNAASDKNIKDGVCAQIEKNFARAKWKKAVRVTTLMKRLRAPEQSSTAAAQSASATDTATPGA
AGGATAAAASGATSAPPEGDAARAASDNVAPADRSATPATDGSATPATDGSVTPATDGSITPATDGSVTP
ATDRSATPATDGRATPATEESTVPTTQSSAMLATKAAATPEPAMAQPDSTAPEGATGQAPPSSKGEAAAG
YAQESQREEAS

TRTRPLEQKLISEEDLAANDILDYKDDDDKV

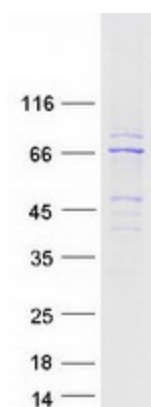
Tag:	C-Myc/DDK
Predicted MW:	54.2 kDa
Concentration:	>0.05 µg/µL as determined by microplate BCA method
Purity:	> 80% as determined by SDS-PAGE and Coomassie blue staining
Buffer:	25 mM Tris-HCl, 100 mM glycine, pH 7.3, 10% glycerol
Preparation:	Recombinant protein was captured through anti-DDK affinity column followed by conventional chromatography steps.
Note:	For testing in cell culture applications, please filter before use. Note that you may experience some loss of protein during the filtration process.
Storage:	Store at -80°C.
Stability:	Stable for 12 months from the date of receipt of the product under proper storage and handling conditions. Avoid repeated freeze-thaw cycles.



[View online »](#)

RefSeq:	NP_076951
Locus ID:	79012
UniProt ID:	Q8NCB2 , A0A140VKD5
RefSeq Size:	3028
Cytogenetics:	3p21.31
RefSeq ORF:	1503
Synonyms:	1G5; VACAMKL
Summary:	Does not appear to have detectable kinase activity.[UniProtKB/Swiss-Prot Function]
Protein Families:	Druggable Genome, Protein Kinase

Product images:



Coomassie blue staining of purified CAMKV protein (Cat# [TP302441]). The protein was produced from HEK293T cells transfected with CAMKV cDNA clone (Cat# [RC202441]) using MegaTran 2.0 (Cat# [TT210002]).