

## Product datasheet for **TP302436**

### CK1 epsilon (CSNK1E) (NM\_152221) Human Recombinant Protein

#### Product data:

Product Type:	Recombinant Proteins
Description:	Recombinant protein of human casein kinase 1, epsilon (CSNK1E), transcript variant 1, 20 µg
Species:	Human
Expression Host:	HEK293T
Expression cDNA Clone or AA Sequence:	>RC202436 protein sequence <b>Red</b> =Cloning site <b>Green</b> =Tags(s)

MELRVGNKYRLGRKIGSGSFGDIYLGANIASGEEVAIKLECVKTKHPQLHIESKFYKMMQGGVGIPIKW  
CGAEGDYNVMVMELLGPSLEDLNFCSRKFSLKTVLLLADQMISRIEYIHSKNFIHRDVKPDNFLMGLGK  
KGNLVYIIDFGLAKKYRDARTHQHIPPYRENKNTGTARYASINTHLGIEQSRDDLES LGVYLMYFNLGS  
LPWQGLKAATKRQKYERISEKKMSTPIEVLCKGYPSEFSTYLNFCRSLRFDDKPDYSYLRQLFRNLFHRQ  
GFSYDYVFDWNMLKFGAARNPEDVDRERREHEREERMGQLRGSATRALPPGPPTGATANRLRSAAEPVA  
S  
TPASRIQPAGNTSPRAISRVDREKVMRLHRGAPANVSSDLTGRQEVSRIPASQTSVPFDHLGK

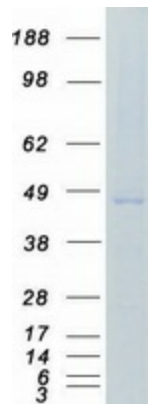
**TRTRPLEQKLISEEDLAANDILDYKDDDDKV**

Tag:	C-Myc/DDK
Predicted MW:	47.1 kDa
Concentration:	>0.05 µg/µL as determined by microplate BCA method
Purity:	> 80% as determined by SDS-PAGE and Coomassie blue staining
Buffer:	25 mM Tris-HCl, 100 mM glycine, pH 7.3, 10% glycerol
Preparation:	Recombinant protein was captured through anti-DDK affinity column followed by conventional chromatography steps.
Note:	For testing in cell culture applications, please filter before use. Note that you may experience some loss of protein during the filtration process.
Storage:	Store at -80°C.
Stability:	Stable for 12 months from the date of receipt of the product under proper storage and handling conditions. Avoid repeated freeze-thaw cycles.
RefSeq:	<u><a href="#">NP_689407</a></u>



[View online »](#)

Locus ID:	1454
UniProt ID:	<a href="#">P49674</a>
RefSeq Size:	2820
Cytogenetics:	22q13.1
RefSeq ORF:	1248
Synonyms:	CKIε; CKIepsilon; HCKIE
Summary:	<p>The protein encoded by this gene is a serine/threonine protein kinase and a member of the casein kinase I protein family, whose members have been implicated in the control of cytoplasmic and nuclear processes, including DNA replication and repair. The encoded protein is found in the cytoplasm as a monomer and can phosphorylate a variety of proteins, including itself. This protein has been shown to phosphorylate period, a circadian rhythm protein. Two transcript variants encoding the same protein have been found for this gene. [provided by RefSeq, Feb 2014]</p>
Protein Families:	Druggable Genome, Protein Kinase
Protein Pathways:	Circadian rhythm - mammal, Hedgehog signaling pathway, Wnt signaling pathway

**Product images:**

Coomassie blue staining of purified CSNK1E protein (Cat# TP302436). The protein was produced from HEK293T cells transfected with CSNK1E cDNA clone (Cat# [RC202436]) using MegaTran 2.0 (Cat# [TT210002]).