

## Product datasheet for TP302435

### CSNK2A2 (NM\_001896) Human Recombinant Protein

#### Product data:

Product Type:	Recombinant Proteins
Description:	Recombinant protein of human casein kinase 2, alpha prime polypeptide (CSNK2A2), 20 µg
Species:	Human
Expression Host:	HEK293T
Expression cDNA Clone or AA Sequence:	>RC202435 protein sequence <b>Red</b> =Cloning site <b>Green</b> =Tags(s)
	<p>MPGPAAGSRARVYAEVNSLRSREYWDYEAHVPSWGNQDDYQLVRKLGKGYSEVFEAINITNNERVWVKI LKPVKKKKIKREVKILENLRGGTNIKLIIDTVKDPVSKTPALVFEYINNTDFKQLYQILTDFDIRFYMYE LLKALDYCHSKGIMHRDVKPHNVMIDHQKQLRLIDWGLAEFYHPAQEYNVRVASRYFKGPELLVDYQM Y DYSLDMWSLGCMLASMIFRREPFHGGQDNYDQLVRIAKVLGTEELYGYLKKYHIDLDPHFNDILGQHSRK RWENFIHSENRLVSPEALDLLDKLLRYDHQQLTAKEAMEHPYFYPVWKEQSQPCADNAVLSSGLTAAR</p> <p><b>TRTRPLEQKLISEEDLAANDILDYKDDDDKV</b></p>
Tag:	C-Myc/DDK
Predicted MW:	41 kDa
Concentration:	>0.05 µg/µL as determined by microplate BCA method
Purity:	> 80% as determined by SDS-PAGE and Coomassie blue staining
Buffer:	25 mM Tris-HCl, 100 mM glycine, pH 7.3, 10% glycerol
Preparation:	Recombinant protein was captured through anti-DDK affinity column followed by conventional chromatography steps.
Note:	For testing in cell culture applications, please filter before use. Note that you may experience some loss of protein during the filtration process.
Storage:	Store at -80°C.
Stability:	Stable for 12 months from the date of receipt of the product under proper storage and handling conditions. Avoid repeated freeze-thaw cycles.
RefSeq:	<u><a href="#">NP_001887</a></u>
Locus ID:	1459



[View online »](#)

UniProt ID: [P19784](#)

RefSeq Size: 1674

Cytogenetics: 16q21

RefSeq ORF: 1050

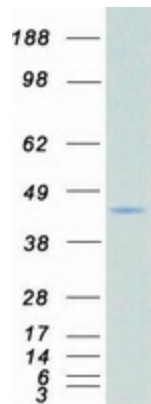
Synonyms: CK2A2; CK2alpha'; CSNK2A1

**Summary:** This gene encodes the alpha', or alpha 2, catalytic subunit of the protein kinase enzyme, casein kinase 2 (CK2). Casein kinase 2 is a serine/threonine protein kinase that phosphorylates acidic proteins such as casein. It is involved in various cellular processes, including cell cycle control, apoptosis, and circadian rhythms. This heterotetrameric kinase includes two catalytic subunits, either alpha or alpha', and two regulatory beta subunits. The closely related gene paralog encoding the alpha, or alpha 1 subunit (CSNK2A1, Gene ID: 1457) is found on chromosome 20. An intronic variant in this gene (alpha 2) may be associated with leukocyte telomere length in a South Asian population. A related transcribed pseudogene is found on chromosome 11. [provided by RefSeq, Aug 2017]

**Protein Families:** Druggable Genome, Protein Kinase

**Protein Pathways:** Adherens junction, Tight junction, Wnt signaling pathway

### Product images:



Coomassie blue staining of purified CSNK2A2 protein (Cat# TP302435). The protein was produced from HEK293T cells transfected with CSNK2A2 cDNA clone (Cat# [RC202435]) using MegaTran 2.0 (Cat# [TT210002]).