

Product datasheet for **TP302430L**

RGS16 (NM_002928) Human Recombinant Protein

Product data:

Product Type: Recombinant Proteins

Description: Recombinant protein of human regulator of G-protein signaling 16 (RGS16), 1 mg

Species: Human

Expression Host: HEK293T

**Expression cDNA Clone
or AA Sequence:** >RC202430 protein sequence
Red=Cloning site **Green**=Tags(s)

MCRTLAAFPTTCLERAKEFKTRLGIFLHKSELGCDTGSTGKFEWGSKHSKENRNFSEDLGWRESFDLLL
SSKNGVAAFHAFKTEFSEENLEFWLACEEFKKIRSATKLASRAHQIFEEFICSEAPKEVNIDHETRELT
RMNLQTATATCFDAAQGKTRTLMKDSYPRFLKSPAYRDLAAQASAASATLSSCSLDEPSHT

TRTRPLEQKLISEEDLAANDILDYKDDDDKV

Tag: C-Myc/DDK

Predicted MW: 22.6 kDa

Concentration: >0.05 µg/µL as determined by microplate BCA method

Purity: > 80% as determined by SDS-PAGE and Coomassie blue staining

Buffer: 25 mM Tris-HCl, 100 mM glycine, pH 7.3, 10% glycerol

Preparation: Recombinant protein was captured through anti-DDK affinity column followed by conventional chromatography steps.

Note: For testing in cell culture applications, please filter before use. Note that you may experience some loss of protein during the filtration process.

Storage: Store at -80°C.

Stability: Stable for 12 months from the date of receipt of the product under proper storage and handling conditions. Avoid repeated freeze-thaw cycles.

RefSeq: [NP_002919](#)

Locus ID: 6004

UniProt ID: [O15492](#)

RefSeq Size: 2432



[View online »](#)

Cytogenetics: 1q25.3

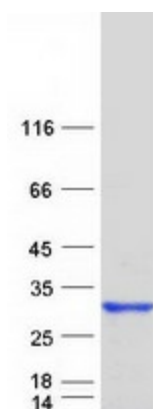
RefSeq ORF: 606

Synonyms: A28-RGS14; A28-RGS14P; RGS-R

Summary: The protein encoded by this gene belongs to the 'regulator of G protein signaling' family. It inhibits signal transduction by increasing the GTPase activity of G protein alpha subunits. It also may play a role in regulating the kinetics of signaling in the phototransduction cascade. [provided by RefSeq, Jul 2008]

Protein Families: Druggable Genome

Product images:



Coomassie blue staining of purified RGS16 protein (Cat# [TP302430]). The protein was produced from HEK293T cells transfected with RGS16 cDNA clone (Cat# [RC202430]) using MegaTran 2.0 (Cat# [TT210002]).