

## Product datasheet for TP302430

### RGS16 (NM\_002928) Human Recombinant Protein

#### Product data:

Product Type:	Recombinant Proteins
Description:	Recombinant protein of human regulator of G-protein signaling 16 (RGS16), 20 µg
Species:	Human
Expression Host:	HEK293T
Expression cDNA Clone or AA Sequence:	>RC202430 protein sequence Red=Cloning site Green=Tags(s)
	MCRTLAAFPTTCLERAKEFKTRLGIFLHKSELGCDTGSTGKFEWGSKHSKENRNFSEDLGWRESFDLLL SSKNGVAAFHAFKTEFSEENLEFWLACEEFKIRSATKLASRAHQIFEEFICSEAPKEVNIDHETRELT RMNLQTATATCFDAAQGKTRTLMEKDSYPRFLKSPAYRDLAAQASAASATLSSCSLDEPSHT
	TRTRPLEQKLISEEDLAANDILDYKDDDDKV
Tag:	C-Myc/DDK
Predicted MW:	22.6 kDa
Concentration:	>0.05 µg/µL as determined by microplate BCA method
Purity:	> 80% as determined by SDS-PAGE and Coomassie blue staining
Buffer:	25 mM Tris-HCl, 100 mM glycine, pH 7.3, 10% glycerol
Preparation:	Recombinant protein was captured through anti-DDK affinity column followed by conventional chromatography steps.
Note:	For testing in cell culture applications, please filter before use. Note that you may experience some loss of protein during the filtration process.
Storage:	Store at -80°C.
Stability:	Stable for 12 months from the date of receipt of the product under proper storage and handling conditions. Avoid repeated freeze-thaw cycles.
RefSeq:	<a href="#">NP_002919</a>
Locus ID:	6004
UniProt ID:	<a href="#">O15492</a>
RefSeq Size:	2432



[View online »](#)

Cytogenetics: 1q25.3

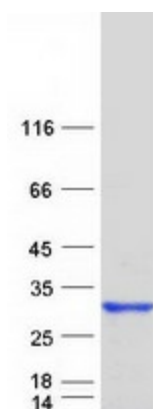
RefSeq ORF: 606

Synonyms: A28-RGS14; A28-RGS14P; RGS-R

**Summary:** The protein encoded by this gene belongs to the 'regulator of G protein signaling' family. It inhibits signal transduction by increasing the GTPase activity of G protein alpha subunits. It also may play a role in regulating the kinetics of signaling in the phototransduction cascade. [provided by RefSeq, Jul 2008]

**Protein Families:** Druggable Genome

### Product images:



Coomassie blue staining of purified RGS16 protein (Cat# TP302430). The protein was produced from HEK293T cells transfected with RGS16 cDNA clone (Cat# [RC202430]) using MegaTran 2.0 (Cat# [TT210002]).