

## Product datasheet for **TP302408M**

### TRAP alpha (SSR1) (NM\_003144) Human Recombinant Protein

#### Product data:

Product Type:	Recombinant Proteins
Description:	Recombinant protein of human signal sequence receptor, alpha (SSR1), 100 µg
Species:	Human
Expression Host:	HEK293T
Expression cDNA Clone or AA Sequence:	>RC202408 protein sequence <b>Red</b> =Cloning site <b>Green</b> =Tags(s)
	MRLLPRLLLLLLVFPATVLFRRGGPRGLLAVAQDLTEDEETVEDSIIEDDEDDEAEVEEDEPTDLVEDKEE EDVSGEPEASPSADTTILFVKGEDFPANNIVKFLVGFTNKGTEDFIVESLDASFRYPQDYQFYIQNFTAL PLNTVPPQRQATFEYSFIPAEPMGGRPFGLVINLNYKDLNGNVFQDAVFNQTVTIEREDGLDGETIFM YMFLAGLGLLVIVGLHQLLESKRKRPIQKVEMGTSSQNDVDMSWIPQETLNQINKASPRRLPRKRAQKR SVGSE
	<b>TRTRPLEQKLISEEDLAANDILDYKDDDDKV</b>
Tag:	C-Myc/DDK
Predicted MW:	32.1 kDa
Concentration:	>0.05 µg/µL as determined by microplate BCA method
Purity:	> 80% as determined by SDS-PAGE and Coomassie blue staining
Buffer:	25 mM Tris-HCl, 100 mM glycine, pH 7.3, 10% glycerol
Preparation:	Recombinant protein was captured through anti-DDK affinity column followed by conventional chromatography steps.
Note:	For testing in cell culture applications, please filter before use. Note that you may experience some loss of protein during the filtration process.
Storage:	Store at -80°C.
Stability:	Stable for 12 months from the date of receipt of the product under proper storage and handling conditions. Avoid repeated freeze-thaw cycles.
RefSeq:	<a href="#">NP_003135</a>
Locus ID:	6745



[View online »](#)

UniProt ID: [P43307](#)

RefSeq Size: 9793

Cytogenetics: 6p24.3

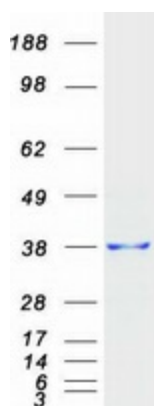
RefSeq ORF: 858

Synonyms: TRAPA

**Summary:** The signal sequence receptor (SSR) is a glycosylated endoplasmic reticulum (ER) membrane receptor associated with protein translocation across the ER membrane. The SSR consists of 2 subunits, a 34-kD glycoprotein encoded by this gene and a 22-kD glycoprotein. This gene generates several mRNA species as a result of complex alternative polyadenylation. This gene is unusual in that it utilizes arrays of polyA signal sequences that are mostly non-canonical. Multiple transcript variants encoding different isoforms have been found for this gene. [provided by RefSeq, May 2014]

**Protein Families:** Druggable Genome, Transmembrane

### Product images:



Coomassie blue staining of purified SSR1 protein (Cat# [TP302408]). The protein was produced from HEK293T cells transfected with SSR1 cDNA clone (Cat# [RC202408]) using MegaTran 2.0 (Cat# [TT210002]).