

Product datasheet for **TP302405**

Prostaglandin E Synthase (PTGES) (NM_004878) Human Recombinant Protein

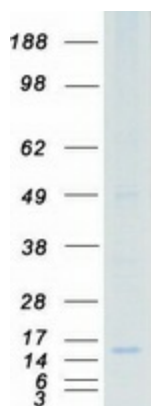
Product data:

| | |
|---------------------------------------|--|
| Product Type: | Recombinant Proteins |
| Description: | Recombinant protein of human prostaglandin E synthase (PTGES), 20 µg |
| Species: | Human |
| Expression Host: | HEK293T |
| Expression cDNA Clone or AA Sequence: | >RC202405 protein sequence Red =Cloning site Green =Tags(s) |
| | MPAHSVMSSPALPAFLLCSTLLVIKMYVVAITGQVRLRKKAFANPEDALRHGGPQYCRSDPDVERCLR AHRNDMETIYPFLFLGFVYSFLGPNPFVAWMHFLVFLVGRVAHTVAYLGKLRAPIRSVTYTLAQLPCASM ALQILWEAARHL |
| | TRTRPLEQKLISEEDLAANDILDYKDDDDKV |
| Tag: | C-Myc/DDK |
| Predicted MW: | 16.9 kDa |
| Concentration: | >0.05 µg/µL as determined by microplate BCA method |
| Purity: | > 80% as determined by SDS-PAGE and Coomassie blue staining |
| Buffer: | 25 mM Tris-HCl, 100 mM glycine, pH 7.3, 10% glycerol |
| Preparation: | Recombinant protein was captured through anti-DDK affinity column followed by conventional chromatography steps. |
| Note: | For testing in cell culture applications, please filter before use. Note that you may experience some loss of protein during the filtration process. |
| Storage: | Store at -80°C. |
| Stability: | Stable for 12 months from the date of receipt of the product under proper storage and handling conditions. Avoid repeated freeze-thaw cycles. |
| RefSeq: | NP_004869 |
| Locus ID: | 9536 |
| UniProt ID: | O14684 |
| RefSeq Size: | 1787 |



[View online »](#)

| | |
|--------------------------|---|
| Cytogenetics: | 9q34.11 |
| RefSeq ORF: | 456 |
| Synonyms: | MGST-IV; MGST1-L1; MGST1L1; MPGES; mPGES-1; PGES; PIG12; PP102; PP1294; TP53I12 |
| Summary: | The protein encoded by this gene is a glutathione-dependent prostaglandin E synthase. The expression of this gene has been shown to be induced by proinflammatory cytokine interleukin 1 beta (IL1B). Its expression can also be induced by tumor suppressor protein TP53, and may be involved in TP53 induced apoptosis. Knockout studies in mice suggest that this gene may contribute to the pathogenesis of collagen-induced arthritis and mediate acute pain during inflammatory responses. [provided by RefSeq, Jul 2008] |
| Protein Families: | Druggable Genome, Transmembrane |
| Protein Pathways: | Arachidonic acid metabolism, Metabolic pathways |

Product images:

Coomassie blue staining of purified PTGES protein (Cat# TP302405). The protein was produced from HEK293T cells transfected with PTGES cDNA clone (Cat# [RC202405]) using MegaTran 2.0 (Cat# [TT210002]).