

Product datasheet for **TP302398M**

GOLPH3L (NM_018178) Human Recombinant Protein

Product data:

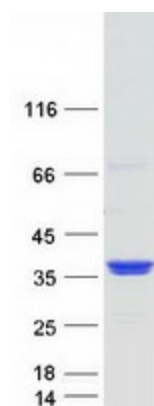
Product Type:	Recombinant Proteins
Description:	Recombinant protein of human golgi phosphoprotein 3-like (GOLPH3L), 100 µg
Species:	Human
Expression Host:	HEK293T
Expression cDNA Clone or AA Sequence:	>RC202398 protein sequence Red =Cloning site Green =Tags(s)
	<p>MTTLTHRARRTEISKNSEKKMESEEDSNWEKSPDNEDSGDSKDIRLTLMEEVLLLGLKDKEGYTSFWNDC ISSGLRGGILIELAMRGRIYLEPPTMRKKRLDRKVLLKSDSPTGDVLLDETLLKHIAKATEPTETVQTWIE LLTGETWNPFLQYQLRNVRERIAKNLVEKGILTTEKQNFLLFDMTTHPVTNTTEKQRLVKKLQDSVLER WVNDPQRMDKRTLALLVLAHSSDVLENVFSSLDDKYDVAMNRAKDLVELDPEVEGTKPSATEMIWAVL A AFNKS</p> <p>TRTRPLEQKLISEEDLAANDILDYKDDDDKV</p>
Tag:	C-Myc/DDK
Predicted MW:	32.6 kDa
Concentration:	>0.05 µg/µL as determined by microplate BCA method
Purity:	> 80% as determined by SDS-PAGE and Coomassie blue staining
Buffer:	25 mM Tris-HCl, 100 mM glycine, pH 7.3, 10% glycerol
Preparation:	Recombinant protein was captured through anti-DDK affinity column followed by conventional chromatography steps.
Note:	For testing in cell culture applications, please filter before use. Note that you may experience some loss of protein during the filtration process.
Storage:	Store at -80°C.
Stability:	Stable for 12 months from the date of receipt of the product under proper storage and handling conditions. Avoid repeated freeze-thaw cycles.
RefSeq:	<u>NP_060648</u>
Locus ID:	55204



[View online »](#)

UniProt ID:	<u>Q9H4A5</u>
RefSeq Size:	3208
Cytogenetics:	1q21.3
RefSeq ORF:	855
Synonyms:	GPP34R
Summary:	The Golgi complex plays a key role in the sorting and modification of proteins exported from the endoplasmic reticulum. The protein encoded by this gene is localized at the Golgi stack and may have a regulatory role in Golgi trafficking. [provided by RefSeq, Jul 2008]

Product images:



Coomassie blue staining of purified GOLPH3L protein (Cat# [TP302398]). The protein was produced from HEK293T cells transfected with GOLPH3L cDNA clone (Cat# [RC202398]) using MegaTran 2.0 (Cat# [TT210002]).